



7 Mount Grace Drive, Evening Hill, Poole, Dorset, BH14 8NB

£11,000 Per Month

TO LET



EST. 1977

KEY DRUMMOND

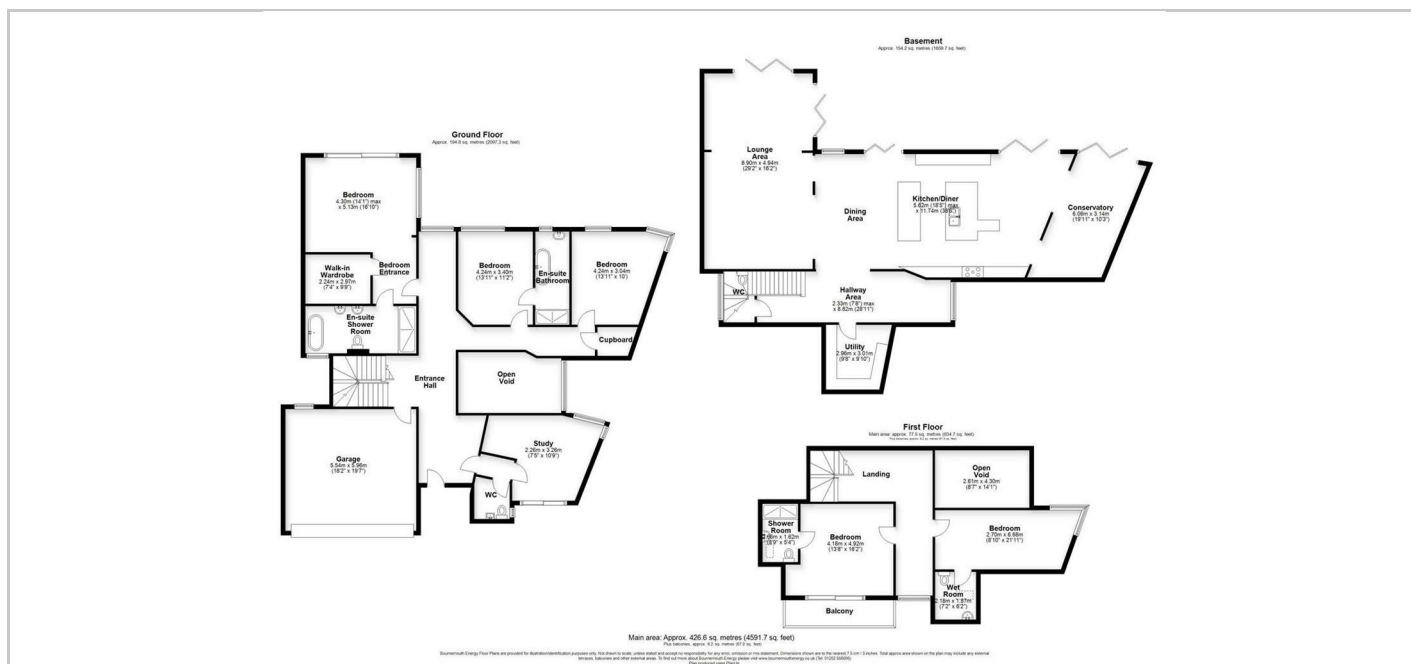
ESTATE AGENTS



- Five Bedrooms, Four En-Suites
- Over 4500 SQFT of Accommodation
- Swimming Pool and Astro Pitch
- Ideal Family Home
- Self Contained Annex
- Impressive Open Plan Living Area
- Fantastic Garden Space
- Modern Design Throughout
- Direct Access to Luscombe Nature Valley
- Double Garage and Large Driveway

## THE PROPERTY

A contemporary family home situated in one of Evening Hill's most sought after roads. The property has been finished to an extremely high standard throughout and offers spacious accommodation in excess of 4500 SQFT.



## SITUATION

## Directions