



9 The Pentagon 52 Haven Road, Poole BH13 7LU
£389,950 Share of Freehold





Canford Cliffs

Canford Cliffs Village is well known for being one of the most prestigious places to live, it has an assortment of café bars, restaurants and speciality shops with a wide variety of properties ranging from luxury apartments to contemporary designed cliff top residences. The world famous Sandbanks Peninsula and Poole Harbour are nearby with safe sandy beaches, marinas and yacht clubs as well as a whole host of water-sports facilities. The 18 hole Championship Parkstone Golf Club is approximately a mile away whilst the more comprehensive towns of Poole and Bournemouth are approximately two miles equidistant.

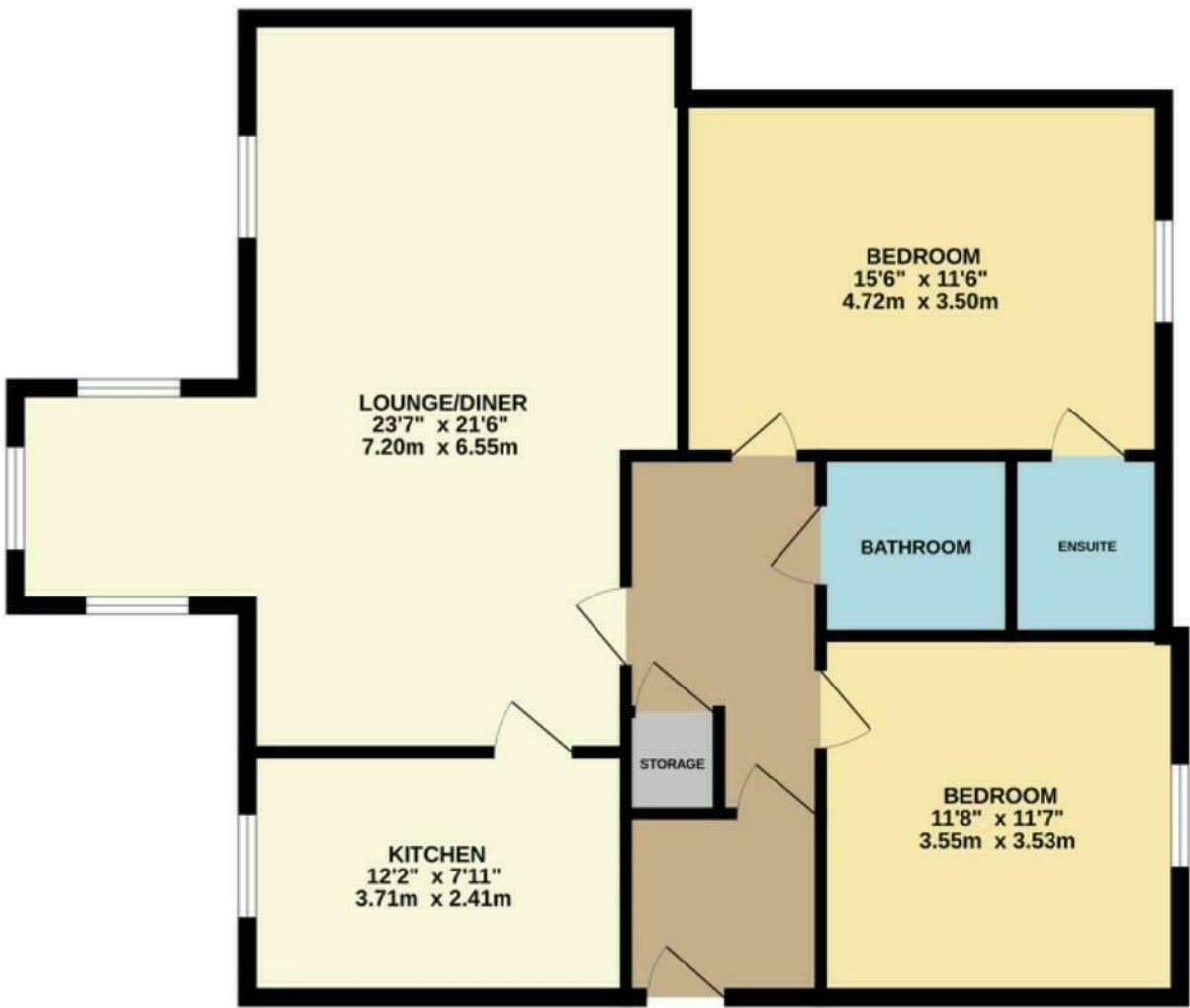
Property Comprises

The Pentagon is a purpose built block of apartments, situated within the heart of Canford Cliffs Village whilst also being close proximity to Canford Cliffs beach. The apartment offers spacious accommodation throughout, comprising a 23ft dual aspect west facing living/dining room, triple aspect reading area, fully fitted kitchen, two large double bedrooms both benefitting from fitted wardrobes, two bathrooms (en suite to master bedroom), a generous entrance hallway and ample built-in storage throughout the apartment. The property also benefits from its own private lobby area. The grounds are communal and beautifully kept and there is a lift in the building. Further benefits include allocated under-croft off road parking and a separate private lockable storage room.

Tenure: Share of Freehold

Maintenance: £2,747.50 pa to include building insurance, window cleaning, gardening, maintenance & cleaning of communal areas.

Council Tax Band: F



Whilst every attempt has been made to ensure the accuracy of the floorplan contained here, measurements of doors, windows, rooms and any other items are approximate and no responsibility is taken for any error, omission or mis-statement. This plan is for illustrative purposes only and should be used as such by any prospective purchaser. The services, systems and appliances shown have not been tested and no guarantee as to their operability or efficiency can be given.
Made with Metropix ©2024

Key Drummond

Tel: 01202 700771
canfordcliffs@keydrummond.com

www.keydrummond.com

All room dimensions given above are approximate measurements
These particulars are intended only to give a brief description of the property as a guide to prospective buyers. Accordingly:
• Their accuracy is not guaranteed and neither Key Drummond Estate Agents, nor the vendors accept any liability in respect of their contents.
• They do not constitute an offer of contract for sale.
• Any prospective purchasers should satisfy themselves by inspection or otherwise as to the correctness of any statements or information in these particulars. Please refer to the Agents if you require further clarification or information.
The Agent has not tested any apparatus, equipment, fixtures and fittings or services and so cannot verify that they are in working order or fit for the purpose. A buyer is advised to obtain verification from their Solicitor or Surveyor.

References to the Tenure of a Property are based on information supplied by the Seller. The Agent has not had sight of the title documents. A Buyer is advised to obtain verification from their Solicitor.

