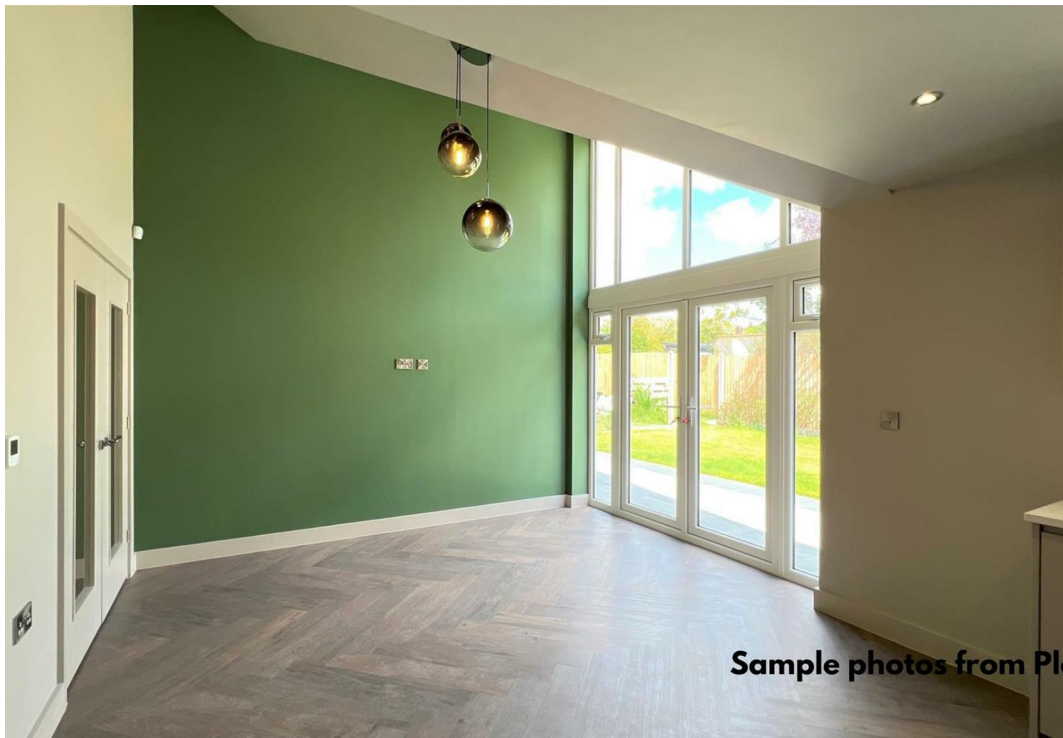




Plot 7, The Willows 19 Woodlinken Drive, Verwood BH31 6BN
£710,000 Freehold



Sample photos from Plot



Sample photos from Plot

Welcome to The Willows. Step into this exquisite, newly built bungalow boasting three generously sized double bedrooms. Nestled in a serene and secluded cul-de-sac, this exclusive development comprises only seven homes.

Discover the perfect harmony between tranquility and convenience as The Willows rests within walking distance of the renowned Ringwood Forest. Immerse yourself in the beauty of nature, taking leisurely strolls or engaging in outdoor activities just a stone's throw away. Additionally, you'll find a host of local amenities within easy reach, ensuring all your daily needs are met with utmost convenience.

- NEW BUILD PROPERTY
- LEVEL ACCESS THROUGHOUT
- QUIET LOCATION
- DETACHED BUNGALOW
- INCENTIVE 50% OF STAMP DUTY PAID
- THREE DOUBLE BEDROOMS
- LARGE DRIVEWAY
- BUILT TO A HIGH STANDARD
- INTEGRAL GARAGE
- SPACIOUS ACCOMMODATION

Area

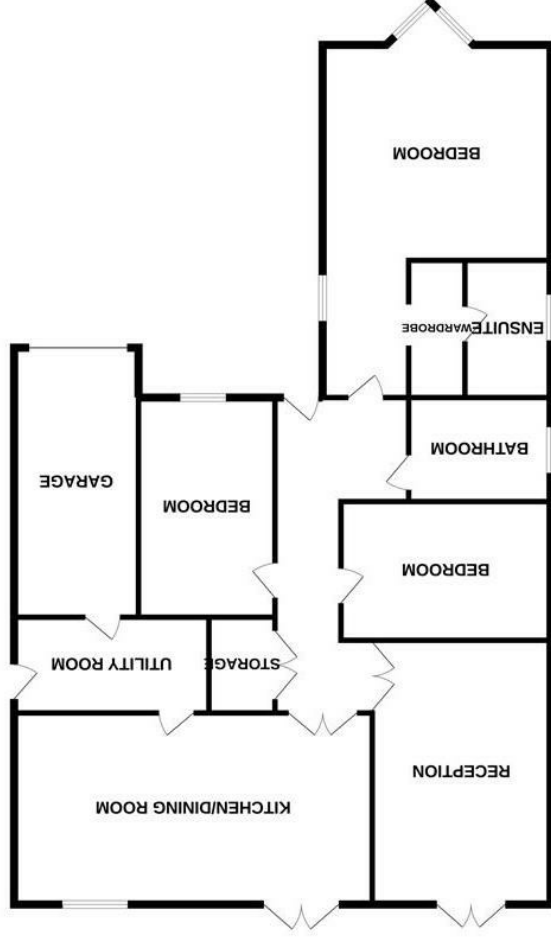
Verwood is a vibrant town that offers an array of local amenities and excellent educational facilities. Residents of Verwood enjoy easy access to a range of amenities, including supermarkets, shops, cafes, restaurants, and recreational facilities. The town also hosts regular markets and community events, fostering a lively and welcoming atmosphere. Verwood is well-served by reputable schools, ensuring quality education for families in the area. The town boasts a selection of primary schools, including Verwood Church of England First School and Hillside Community First School, known for their strong academic programs and supportive learning environments. For secondary education, the highly regarded Emmanuel Middle School and Verwood College provide a comprehensive curriculum and opportunities for personal growth. Overall, Verwood's rich assortment of amenities and excellent schools contribute to its appeal as an ideal place to live and raise a family.

Property Comprises

"The Willows" in Verwood presents an exclusive residence accessed through a private block paved driveway, featuring a generously proportioned driveway capable of accommodating multiple vehicles. The property also offers convenient side access leading to a level rear garden.

This exceptional detached bungalow showcases a luxurious design, complete with spacious interiors. The highlight is a remarkable kitchen, breakfast, and family room adorned with vaulted ceilings, creating an open and airy atmosphere. Additionally, a separate lounge provides a cozy retreat, featuring double patio doors that open up to the rear garden. The master bedroom is truly impressive, boasting an en-suite bathroom and a stylish dressing area.

In addition to the master suite, the property comprises two more double bedrooms, offering ample space for family members or guests. A separate utility room adds convenience, providing access to the integral garage, which further enhances the property's practicality.



GROUND FLOOR
1752 sq.ft. (162.8 sq.m.) approx.

While every attempt has been made to ensure the accuracy of the floorplan contained here, measurements of doors, windows, rooms and any other items are approximate and no responsibility is taken for any error, omission or mis-statement. This plan is for guidance purposes only and should be used as such by any prospective purchaser. The services, systems and appliances shown have not been tested and no guarantee is made with respect to their operability or efficiency can be given.

All room dimensions given above are approximate measurements
 These particulars are intended only to give a brief description of the property as a guide to prospective buyers. Accordingly:
 • Any prospective purchasers should satisfy themselves by inspection or otherwise as to the correctness of any statements or information in these particulars. Please refer to the Agents if you require further clarification or information.
 • They do not constitute an offer of contract for sale.
 • Their accuracy is not guaranteed and neither Key Drummond Estate Agents, nor the vendors accept any liability in respect of their contents.
 • Any energy related - smart metering logo
 The Agent has not tested any apparatus, equipment, fixtures and fittings or services and so cannot verify that they are in working order or fit for the purpose. A buyer is advised to obtain verification from their Solicitor or Surveyor.
 References to the Tenure of a Property are based on information supplied by the Seller. The Agent has not had sight of the title documents. A Buyer is advised to obtain verification from their Solicitor.

Energy Efficiency Rating	
Energy related - smart metering logo	Smart Meter
Energy Efficiency Rating: A	Smart Meter
Energy Efficiency Rating: B	Smart Meter
Energy Efficiency Rating: C	Smart Meter
Energy Efficiency Rating: D	Smart Meter
Energy Efficiency Rating: E	Smart Meter
Energy Efficiency Rating: F	Smart Meter
Energy Efficiency Rating: G	Smart Meter
Energy Efficiency Rating: H	Smart Meter
Energy Efficiency Rating: I	Smart Meter
Energy Efficiency Rating: J	Smart Meter
Energy Efficiency Rating: K	Smart Meter
Energy Efficiency Rating: L	Smart Meter
Energy Efficiency Rating: M	Smart Meter
Energy Efficiency Rating: N	Smart Meter
Energy Efficiency Rating: O	Smart Meter
Energy Efficiency Rating: P	Smart Meter
Energy Efficiency Rating: Q	Smart Meter
Energy Efficiency Rating: R	Smart Meter
Energy Efficiency Rating: S	Smart Meter
Energy Efficiency Rating: T	Smart Meter
Energy Efficiency Rating: U	Smart Meter
Energy Efficiency Rating: V	Smart Meter
Energy Efficiency Rating: W	Smart Meter
Energy Efficiency Rating: X	Smart Meter
Energy Efficiency Rating: Y	Smart Meter
Energy Efficiency Rating: Z	Smart Meter

Environmental Impact (CO ₂) Rating	
Environmental Impact (CO ₂) Rating: A	Smart Meter
Environmental Impact (CO ₂) Rating: B	Smart Meter
Environmental Impact (CO ₂) Rating: C	Smart Meter
Environmental Impact (CO ₂) Rating: D	Smart Meter
Environmental Impact (CO ₂) Rating: E	Smart Meter
Environmental Impact (CO ₂) Rating: F	Smart Meter
Environmental Impact (CO ₂) Rating: G	Smart Meter
Environmental Impact (CO ₂) Rating: H	Smart Meter
Environmental Impact (CO ₂) Rating: I	Smart Meter
Environmental Impact (CO ₂) Rating: J	Smart Meter
Environmental Impact (CO ₂) Rating: K	Smart Meter
Environmental Impact (CO ₂) Rating: L	Smart Meter
Environmental Impact (CO ₂) Rating: M	Smart Meter
Environmental Impact (CO ₂) Rating: N	Smart Meter
Environmental Impact (CO ₂) Rating: O	Smart Meter
Environmental Impact (CO ₂) Rating: P	Smart Meter
Environmental Impact (CO ₂) Rating: Q	Smart Meter
Environmental Impact (CO ₂) Rating: R	Smart Meter
Environmental Impact (CO ₂) Rating: S	Smart Meter
Environmental Impact (CO ₂) Rating: T	Smart Meter
Environmental Impact (CO ₂) Rating: U	Smart Meter
Environmental Impact (CO ₂) Rating: V	Smart Meter
Environmental Impact (CO ₂) Rating: W	Smart Meter
Environmental Impact (CO ₂) Rating: X	Smart Meter
Environmental Impact (CO ₂) Rating: Y	Smart Meter
Environmental Impact (CO ₂) Rating: Z	Smart Meter