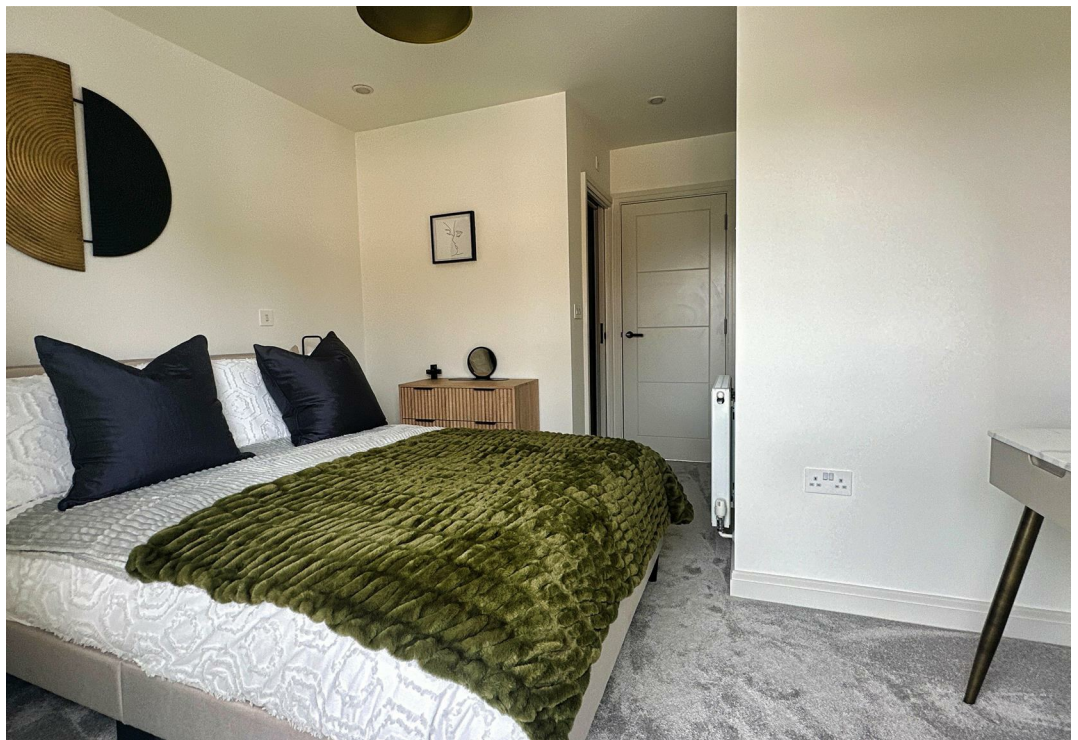




4 Chandlers Mews, Lower Parkstone, Poole BH14 9FB
Guide Price £470,000 Freehold





**** DELUXE NEW BUILD FAMILY HOME **** Situated within an exclusive mews development, this remarkable family residence boasts a collection of beautifully crafted newly built homes. With meticulous attention to detail, the property features a high-specification finish, generously illuminated interiors, and four spacious bedrooms, making it a highly recommended choice for viewing. The home showcases a magnificent deluxe kitchen equipped with integrated appliances, complemented by an open-plan living area and a convenient downstairs cloakroom. Ascending to the first floor, you'll find two double bedrooms alongside a splendid family bathroom. On the top level, the residence unveils a capacious master suite complete with a deluxe en-suite shower room, a charming Juliet balcony, and an additional bedroom. Outside, the property offers two designated parking spaces and a delightful low-maintenance garden with rear access. Enhanced with soundproofed double glazing, underfloor heating on the ground floor, central heating on the upper levels, and solar panels this home epitomizes comfort and luxury.

Entrance Hallway:

Kitchen:

Lounge/Dining Room:

Downstairs Cloakroom:

Master Bedroom:

En-suite Shower Room:

Bedroom Two:

Bedroom Three:

Bedroom Four:

Family Bathroom:

Allocated Parking:

One Allocated Space

Tenure

Tenure: Freehold

Postcode: BH14 9FB

Council Tax: D

School Catchment Area: Please contact BCP for current admission information

Key Drummond Properties:

To see our properties before they go on the market please like us on Facebook (Key Drummond Estate Agents), Instagram (keydrummondoakdale), and YouTube (Key Drummond - Oakdale).

Copyright:

All photos, video, and drone footage are copyrighted by Worldwide Property Sales TA Key Drummond Estate Agents. All rights reserved.

Any redistribution or reproduction of part or all of the contents in any form is prohibited other than the following:

1. You may print or download to local hard disk extracts for your personal and non-commercial use only
2. You may copy the content to individual third parties for their personal use, but only if you acknowledge Key Drummond as the source of the material

You may not, except with our express written permission, distribute or commercially exploit the content. Nor may you transmit it or store it on any other website or another form of the electronic retrieval system.





Key Drummond

Tel: 01202 681113

oakdale@keydrummond.com

www.keydrummond.com

All room dimensions given above are approximate measurements

These particulars are intended only to give a brief description of the property as a guide to prospective buyers. Accordingly:

- Their accuracy is not guaranteed and neither Key Drummond Estate Agents, nor the vendors accept any liability in respect of their contents.
- They do not constitute an offer of contract for sale.
- Any prospective purchasers should satisfy themselves by inspection or otherwise as to the correctness of any statements or information in these particulars. Please refer to the Agents if you require further clarification or information.

The Agent has not tested any apparatus, equipment, fixtures and fittings or services and so cannot verify that they are in working order or fit for the purpose. A buyer is advised to obtain verification from their Solicitor or Surveyor.

References to the Tenure of a Property are based on information supplied by the Seller. The Agent has not had sight of the title documents. A Buyer is advised to obtain verification from their Solicitor.

Energy Efficiency Rating		
	Current	Potential
Very energy efficient - lower running costs		
(92 plus) A		
(81-91) B		
(68-80) C		
(55-68) D		
(38-54) E		
(21-38) F		
(1-20) G		