



9

Chandlers Mews, Lower Parkstone, Poole, BH14 9FB



EST. 1977

KEYDRUMMOND  
ESTATE AGENTS







9

## Chandlers Mews, Lower Parkstone, Poole, BH14 9FB

**\*\* VIEW OUR VIDEO TOUR - DELUXE NEW BUILD FAMILY HOME \*\*** Situated within an exclusive mews development, this remarkable family residence boasts a collection of beautifully crafted newly built homes. With meticulous attention to detail, the property features a high-specification finish, generously illuminated interiors, and four spacious bedrooms, making it a highly recommended choice for viewing. The home showcases a magnificent deluxe kitchen equipped with integrated appliances, complemented by an open-plan living area and a convenient downstairs cloakroom. Ascending to the first floor, you'll find two double bedrooms alongside a splendid family bathroom. On the top level, the residence unveils a capacious master suite complete with a deluxe en-suite shower room, a charming Juliet balcony, and an additional bedroom. Outside, the property offers two designated parking spaces and a delightful low-maintenance garden. Enhanced with soundproofed double glazing, underfloor heating on the ground floor, central heating on the upper levels, and solar panels this home epitomizes comfort and luxury.

Guide Price: £450,000, Tenure: Freehold





*Entrance Hallway:*

*Kitchen:*

*Lounge/Dining Room:*

*Downstairs Cloakroom:*

*Master Bedroom:*

*En-suite Shower Room:*

*Bedroom Two:*

*Bedroom Three:*

*Bedroom Four:*

*Family Bathroom:*

*Allocated Parking:*

One Allocated Space











## *Tenure*

Tenure: Freehold

Postcode: BH14 9FB

Council Tax: D

School Catchment Area: Please contact BCP for current admission information

## *Key Drummond Properties:*

To see our properties before they go on the market please like us on Facebook (Key Drummond Estate Agents), Instagram (keydrummondoakdale), and YouTube (Key Drummond - Oakdale).

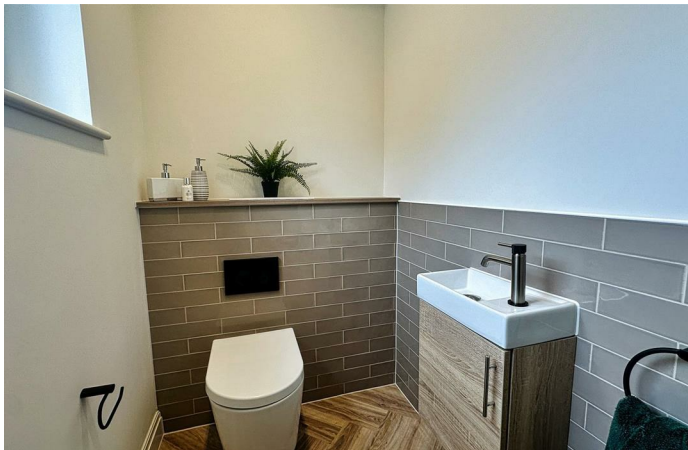
## *Copyright:*

All photos, video, and drone footage are copyrighted by Worldwide Property Sales TA Key Drummond Estate Agents. All rights reserved.

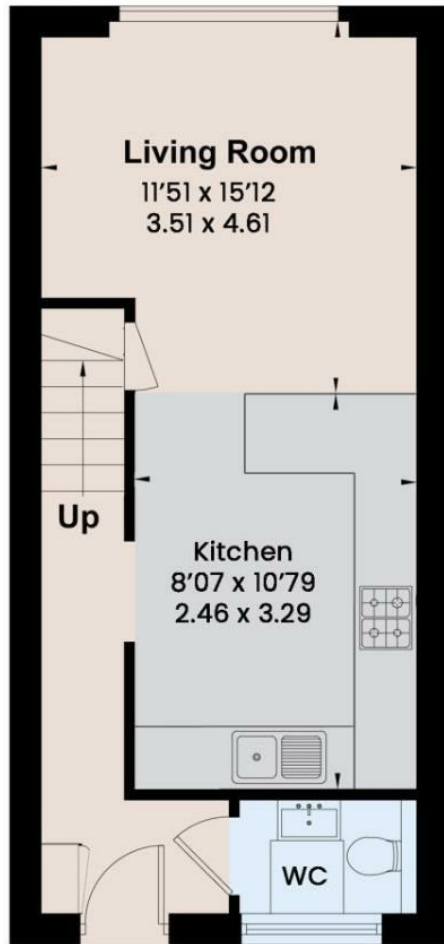
Any redistribution or reproduction of part or all of the contents in any form is prohibited other than the following:

1. You may print or download to local hard disk extracts for your personal and non-commercial use only
2. You may copy the content to individual third parties for their personal use, but only if you acknowledge Key Drummond as the source of the material

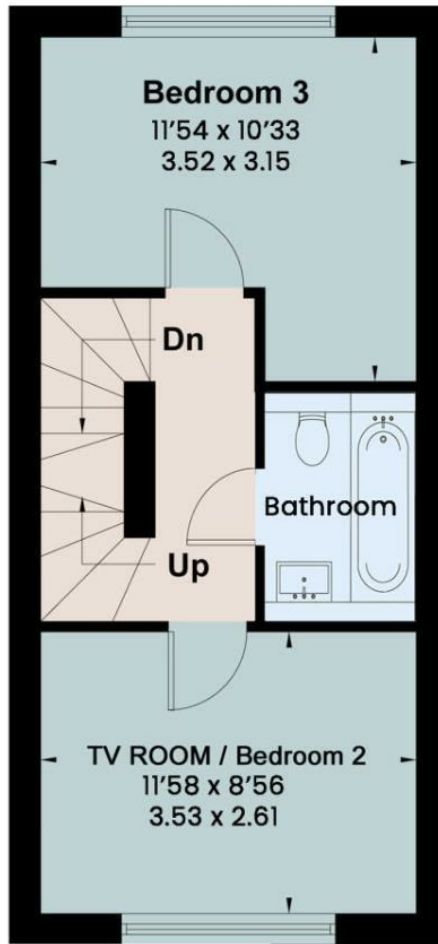
You may not, except with our express written permission, distribute or commercially exploit the content. Nor may you transmit it or store it on any other website or another form of the electronic retrieval system.







Ground Floor



First Floor



Second Floor

These particulars, whilst believed to be accurate are set out as a general outline only for guidance and do not constitute any part of an offer or contract. Intending purchasers should not rely on them as statements of representation of fact, but must satisfy themselves by inspection or otherwise as to their accuracy. No person in this firm's employment has the authority to make or give any representation or warranty in respect of the property.

Energy Efficiency Rating		
	Current	Potential
Very energy efficient - lower running costs		
(92 plus) <b>A</b>		
(81-91) <b>B</b>		
(69-80) <b>C</b>		
(55-68) <b>D</b>		
(39-54) <b>E</b>		
(21-38) <b>F</b>		
(1-20) <b>G</b>		
Not energy efficient - higher running costs		
<b>England &amp; Wales</b>	EU Directive 2002/91/EC	



