



81 Garland Road, Heckford Park, Poole BH15 2LD
Guide Price £500,000 Freehold





**** SOLD BY KEY DRUMMOND - SIMILAR PROPERTIES REQUIRED **** This spacious family house, boasting 4/5 bedrooms, occupies a corner plot in the highly desirable Heckford Park area. Although it requires modernization, this impressive property holds immense potential, best appreciated through an internal viewing. The ground floor comprises a sitting room, a kitchen/dining room, a conservatory, a sunroom, a cloakroom, and a versatile reception/bedroom 5, along with a bathroom and a shower room. On the first floor, there are four bedrooms, a study, a family bathroom, and a separate WC. The sizable loft is boarded and features two dormer windows. The house is conveniently located within walking distance of Poole General and Poole Maternity Hospitals, as well as being in close proximity to Poole Town Centre with its wide range of amenities, including shops, bars, restaurants, cinemas, theatres, and excellent transport links via rail, ferry, bus, and coach stations. Notably, this property is being sold with no forward chain.

It's worth mentioning that the property was initially utilized as a hardware retail shop/business, with a spacious forecourt, garages, and yard access at the rear, alongside the attached living accommodation. The business faced the existing Tatnam shops, which remain in operation to this day. There is the potential for this property to be converted back into a business with living quarters if desired.

Entrance Porch:

Entrance Hall:

Sitting Room:
14'0" x 12'11"

Conservatory:
22'8" x 8'5"

Reception/Bedroom Five:
16'9" x 14'0"

Ground Floor Bathroom:

Ground Floor Shower Room:

Kitchen/Dining Room:
20'8" x 12'11"

Sun Room:

Ground Floor Cloakroom:

Bedroom One:
16'7" x 14'2"

Bedroom Two:
14'0" x 12'11"

Bedroom Three:
12'11" x 12'11"

Bedroom Four:
8'7" x 7'4"

Study:
6'11" x 6'9"

Family Bathroom:

Separate WC:

Two Single Garages:

Tenure

Tenure: FREEHOLD

Postcode: BH15 2LD

EPC: E

Council Tax: C £1733.67 2022/2023

School Catchment Area: Please contact BCP for current admission information

Copyright:

All photos, video, and drone footage are copyrighted by Worldwide Property Sales TA Key Drummond Estate Agents. All rights reserved.

Any redistribution or reproduction of part or all of the contents in any form is prohibited other than the following:

1. You may print or download to local hard disk extracts for your personal and non-commercial use only
2. You may copy the content to individual third parties for their personal use, but only if you acknowledge Key Drummond as the source of the material

You may not, except with our express written permission, distribute or commercially exploit the content. Nor may you transmit it or store it on any other website or another form of the electronic retrieval system.

Key Drummond Properties:

To see our properties before they go on the market please like us on Facebook (Key Drummond Estate Agents), Instagram (keydrummondoakdale), and YouTube (Key Drummond - Oakdale).

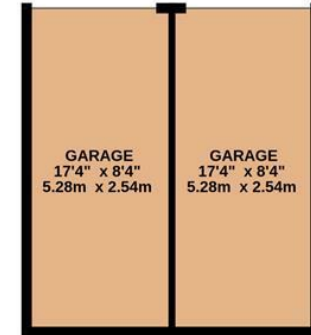
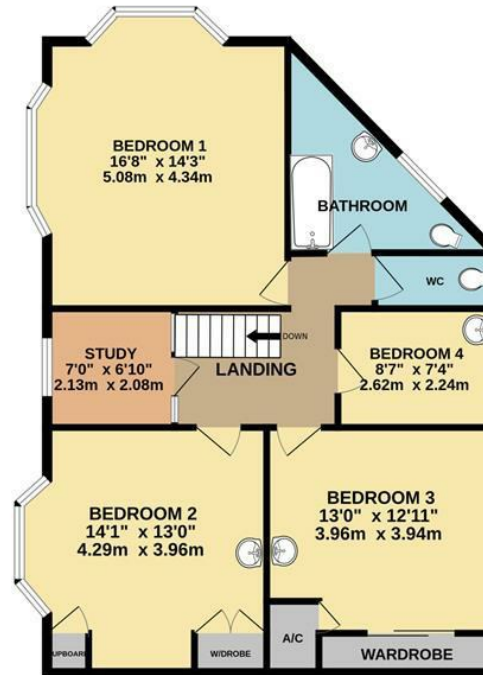




GROUND FLOOR
1128 sq.ft. (104.8 sq.m.) approx.



1ST FLOOR
1169 sq.ft. (108.6 sq.m.) approx.



SCAN ME WITH YOUR SMARTPHONE



TO SEE ALL OF OUR PROPERTIES

TOTAL FLOOR AREA : 2298 sq.ft. (213.5 sq.m.) approx.

Whilst every attempt has been made to ensure the accuracy of the floorplan contained here, measurements of doors, windows, rooms and any other items are approximate and no responsibility is taken for any error, omission or mis-statement. This plan is for illustrative purposes only and should be used as such by any prospective purchaser. The services, systems and appliances shown have not been tested and no guarantee as to their operability or efficiency can be given.

Made with Metropix ©2023

Key Drummond

Tel: 01202 681113
oakdale@keydrummond.com

www.keydrummond.com

All room dimensions given above are approximate measurements

These particulars are intended only to give a brief description of the property as a guide to prospective buyers. Accordingly:

- Their accuracy is not guaranteed and neither Key Drummond Estate Agents, nor the vendors accept any liability in respect of their contents.
- They do not constitute an offer of contract for sale.
- Any prospective purchasers should satisfy themselves by inspection or otherwise as to the correctness of any statements or information in these particulars. Please refer to the Agents if you require further clarification or information.

The Agent has not tested any apparatus, equipment, fixtures and fittings or services and so cannot verify that they are in working order or fit for the purpose. A buyer is advised to obtain verification from their Solicitor or Surveyor.

References to the Tenure of a Property are based on information supplied by the Seller. The Agent has not had sight of the title documents. A Buyer is advised to obtain verification from their Solicitor.

Energy Efficiency Rating		Current	Potential	Environmental Impact (CO ₂) Rating		Current	Potential
Very energy efficient - lower running costs				Very environmentally friendly - lower CO ₂ emissions			
(92 plus) A	(81-91) B			(82 plus) A	(61-80) B		
(89-90) C	(85-86) D			(80-85) C	(59-60) D		
(85-88) E	(81-84) F	53	71	(80-84) E	(55-58) F		
(81-86) F	(75-80) G			(75-79) F	(51-54) G		
(75-80) G				(70-74) G			
Not energy efficient - higher running costs				Not environmentally friendly - higher CO ₂ emissions			
England & Wales		EU Directive 2002/91/EC		England & Wales		EU Directive 2002/91/EC	