

Burnet Ware



Established
1882



burnetware.com

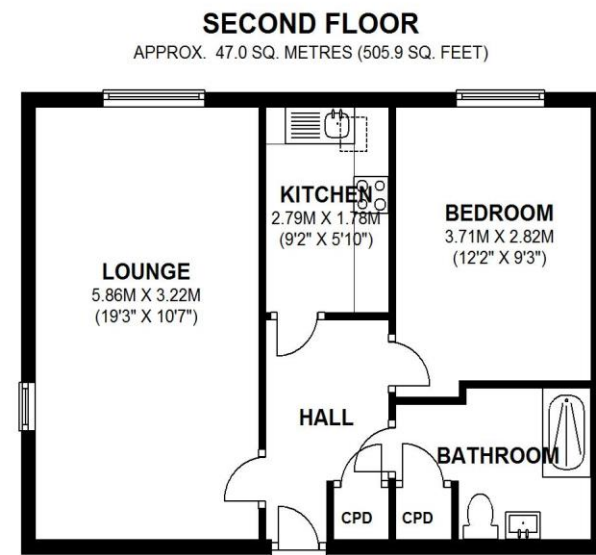
T 020 7733 1293
13 Half Moon Lane
Herne Hill
SE24 9JU

- Garden Views
- Dual Aspect Lounge
- Top Floor Location
- Lift Service
- Double Bedroom
- Shower Room
- Communal Garden
- Parking (unreserved)

Dulwich Mead,
Half Moon Lane, SE24
£325,000 Leasehold

Surveyors
Ombudsman
Service





TOTAL AREA: APPROX. 47.0 SQ. METRES (505.9 SQ. FEET)

30 DULWICH MEAD, HALF MOON LANE, LONDON, SE24 9HS

This attractive one bedroom flat is located on the top floor of this sought after retirement development. The flat has a refitted kitchen and updated shower room and also enjoys a view of the communal grounds. The location of this development allows for access to two town centres, both with excellent shopping and transport facilities.

ENERGY EFFICIENCY RATING

CURRENT: 73 POTENTIAL: 78

Every attempt is made to ensure accuracy, however measurements are approximate, for illustrative purpose and may not be to scale. These particulars shall not be construed as an offer, contract or any part thereof. Statements in these particulars are not binding and are made without warranties on the part of Burnet Ware & Graves Ltd, its employees or its clients. Intending purchasers must verify all statements by inspection or otherwise.