



313 Cranmore Avenue, Swindon, SN3 2ES

Guide Price £260,000 Freehold





313 Cranmore Avenue, Swindon, SN3 2ES

Guide Price £260,000 Freehold

NEW INSTRUCTION A WELL MAINTAINED THREE BEDROOM FAMILY HOME OFFERED TO THE MARKET IN THE DESIREABLE AREA OF PARK SOUTH. THIS SPACIOUS PROPERTY INCLUDES A SITTING ROOM TO FRONT ASPECT, STUDY AREA, AND A MODERN KITCHEN/DINER TO THE GROUND FLOOR. UPSTAIRS THE HOME HAS THREE BEDROOMS, ALL OF WHICH ARE DOUBLES. THERE IS ALSO A FAMILY BATHROOM WITH SEPARATE WC. THE REAR GARDEN HAS BEEN BEAUTIFULLY LANDSCAPED BY THE CURRENT OWNERS TO INCLUDE A COVERED PATIO TERRACE, MAIN AREA LAID TO LAWN AND A BESPOKE GARDEN ROOM THAT INCLUDES POWER, LIGHTING AND IS ALSO INSULATED. DRIVEWAY PARKING IS AVAILABLE FOR TWO VEHICLES.

Situation

Park South is a highly desirable residential area within East Swindon, with various amenities including a community centre, library, medical centre, dental surgery, both primary and secondary schools and various local shops.

Swindon town centre's railway station gives access to London Paddington in under an hour and Junction 15 and 16 of the M4, A419 and A420 are close by.

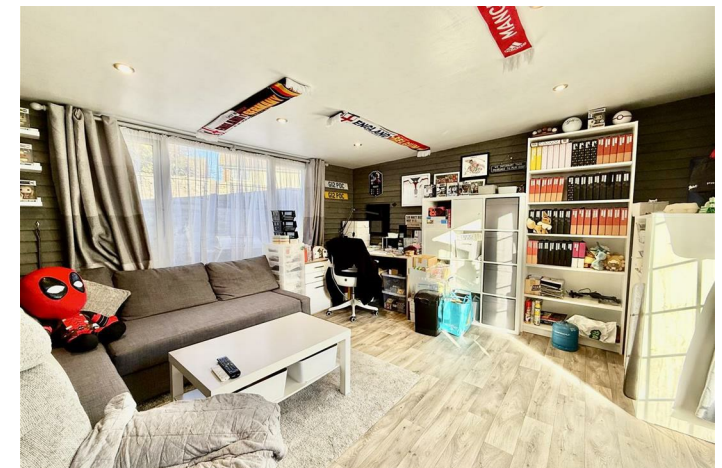
- THREE BEDROOMS
- LIVING ROOM
- KITCHEN/DINER
- STUDY
- FAMILY BATHROOM
- LANDSCAPED REAR GARDEN
- BESPOKE GARDEN ROOM
- DRIVEWAY PARKING



Council Tax Band: B

Viewing Arrangements

For an appointment to view please call Chappells on 01793 618080 or email: sales@chappells.uk.com.



Floor Plans

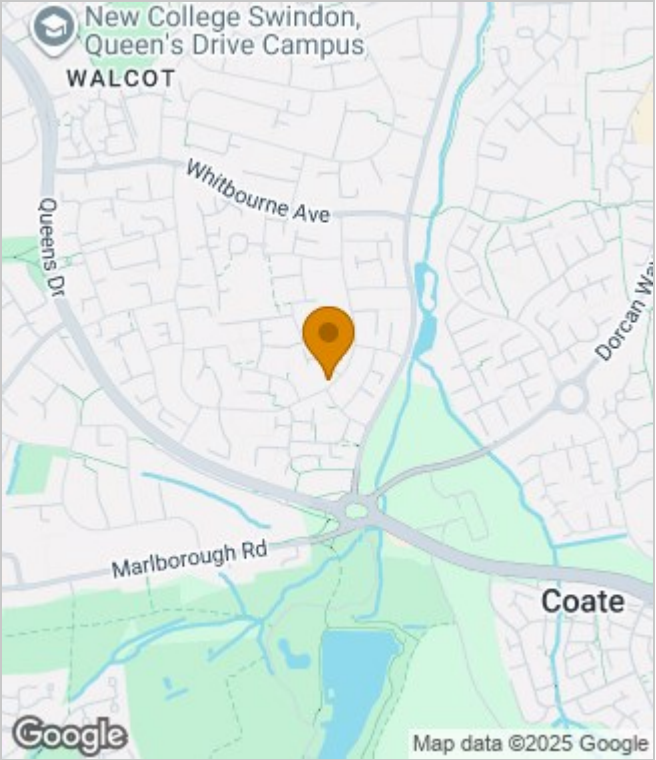


These particulars, whilst believed to be accurate are set out as a general outline only for guidance and do not constitute any part of an offer or contract. Intending purchasers should not rely on them as statements of representation of fact, but must satisfy themselves by inspection or otherwise as to their accuracy. No person in this firms employment has the authority to make or give any representation or warranty in respect of the property.

35-36 Newport Street, Swindon, Wiltshire, SN1 3DP 01793 6180 sales@chappells.uk.com ww.chappells.uk.com



Area Map



Energy Performance Graph

