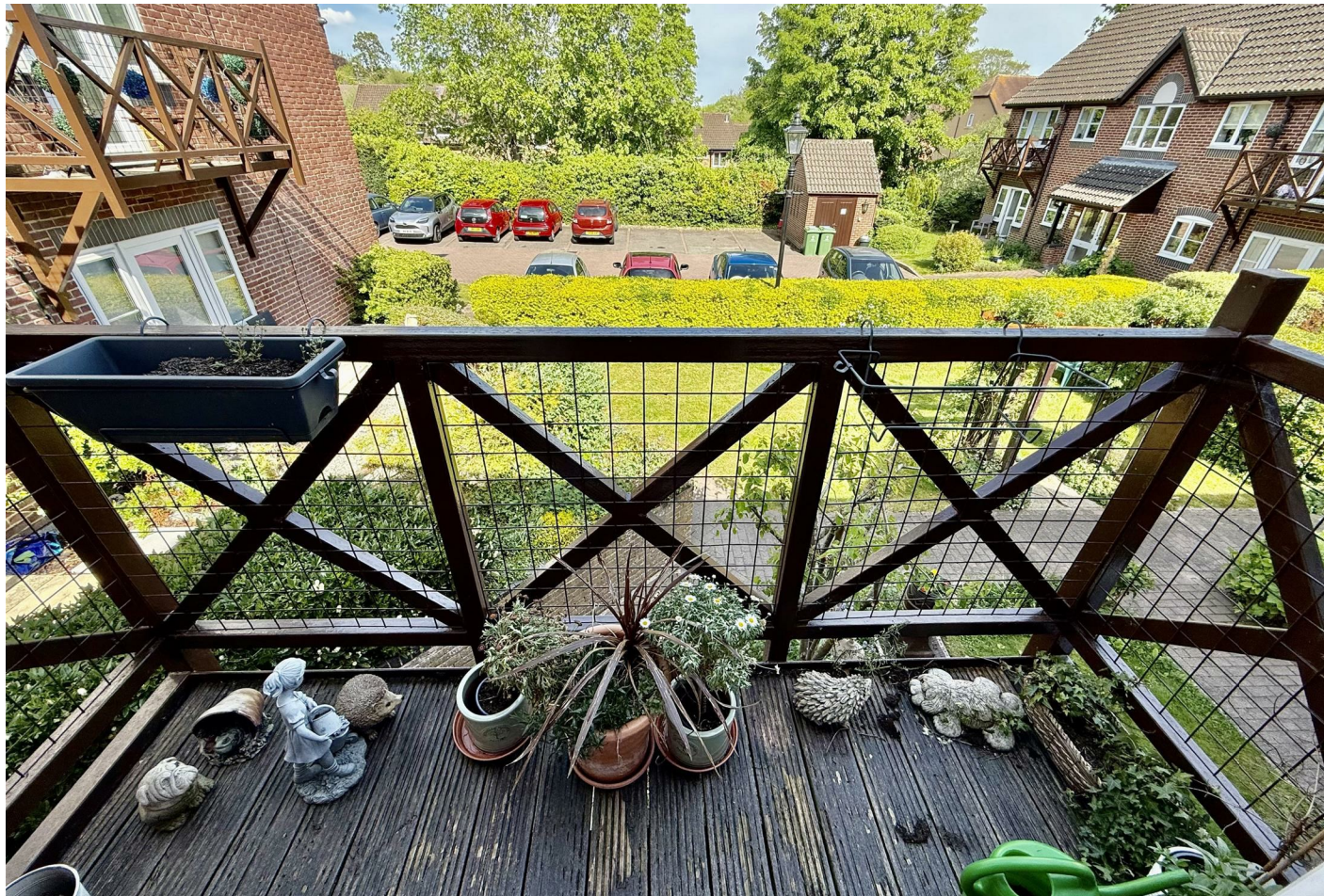




15, Henrietta Court Marlborough Road, Swindon, SN3 1QJ

£165,000 Leasehold





15, Henrietta Court Marlborough Road, Swindon, SN3 1QJ

£165,000 Leasehold

*****COMPLETE ONWARD CHAIN* **** A spacious THREE bedroom first floor apartment situated in the popular retirement complex of Henrietta Court. This apartment is situated in a block of just four apartments sharing their own entrance. The accommodation has been thoughtfully updated by the current owners and offers three double bedrooms, a refitted bathroom with double walk-in shower, a modern kitchen and a generous lounge with French doors opening onto a balcony overlooking the garden. Ample parking is available for both owners and visitors.

Situation

Henrietta Court is a small sought after development for the over 55's within short walking distance to the centre of Old Town, supermarkets, doctors, dentists, library and leisure complex. There are attractive gardens surrounding the property and parking available for owners and visitors.

- MODERNISED THROUGHOUT
- COMPLETED ONWARD CHAIN
- BALCONY
- THREE BEDROOMS
- GENEROUS LOUNGE
- DOUBLE LENGTH SHOWER ROOM
- WELL MAINTAINED GARDENS
- AMPLE PARKING

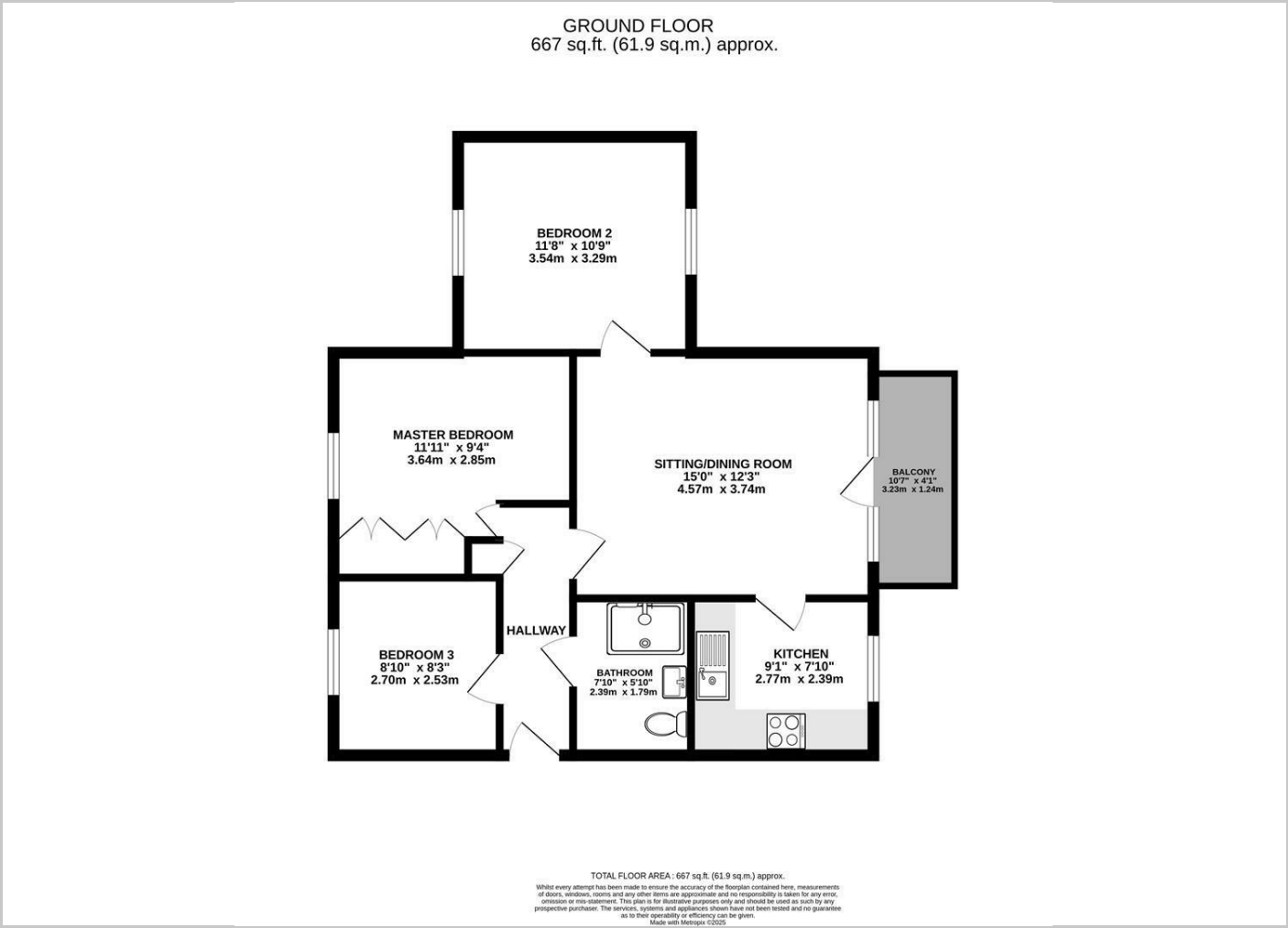
Council Tax Band: D

Viewing Arrangements

For an appointment to view this property please call Chappells Estate Agents on 01793 618080 or email: sales@chappells.uk.com



Floor Plans



These particulars, whilst believed to be accurate are set out as a general outline only for guidance and do not constitute any part of an offer or contract. Intending purchasers should not rely on them as statements of representation of fact, but must satisfy themselves by inspection or otherwise as to their accuracy. No person in this firms employment has the authority to make or give any representation or warranty in respect of the property.

35-36 Newport Street, Swindon, Wiltshire, SN1 3DP 01793 6180 sales@chappells.uk.com ww.chappells.uk.com



Area Map



Energy Performance Graph

