



55a Maunsell Way
Wroughton, Swindon, SN4 9JF
Guide Price £325,000



2



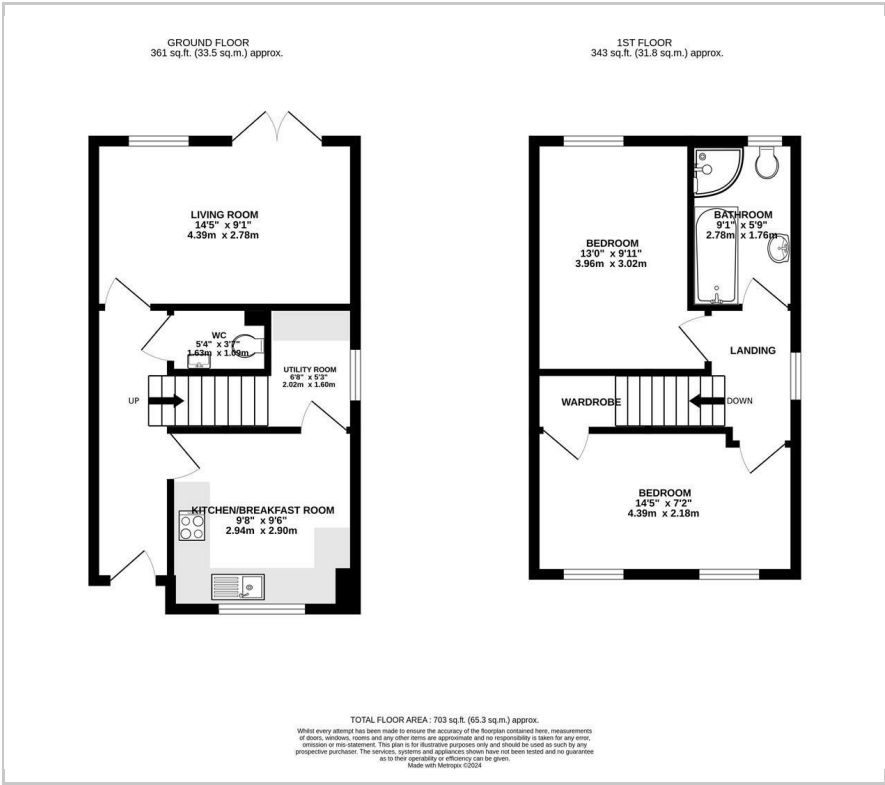
1



1



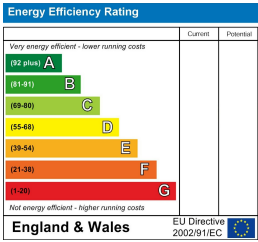
Floor Plan



Area Map



Energy Efficiency Graph



- BRAND NEW DETACHED HOME
- TWO DOUBLE BEDROOMS
- LUXURY FITTED KITCHEN
- FIRST FLOOR FOUR PIECE BATHROOM
- CONTACT OUR VILLAGE SPECIALIST DEPARTMENT
- CORNER PLOT
- LIVING ROOM WITH VIEWS OF THE REAR GARDEN
- DOWNSTAIRS WC
- GOOD SIZE PLOT
- SOLE AGENT

****NEW INSTRUCTION**** Chappells NEW HOMES are delighted to offer to the market this splendid detached home built to a high standard & sitting on a corner plot. The property features a four piece first floor bathroom, luxury fitted kitchen/breakfast room & a downstairs WC. The airy & light living room is at the rear of the house & has feature french doors overlooking the enclosed garden. with two double bedrooms & ample off road parking this property won't hang around. Contact Wroughton's specialist agents Chappells now to book your appointment to view.



Viewing

Please contact our Chappells Estate Agents Sales Office on 01793 618080 if you wish to arrange a viewing appointment for this property or require further information.

These particulars, whilst believed to be accurate are set out as a general outline only for guidance and do not constitute any part of an offer or contract. Intending purchasers should not rely on them as statements of representation of fact, but must satisfy themselves by inspection or otherwise as to their accuracy. No person in this firms employment has the authority to make or give any representation or warranty in respect of the property.

