



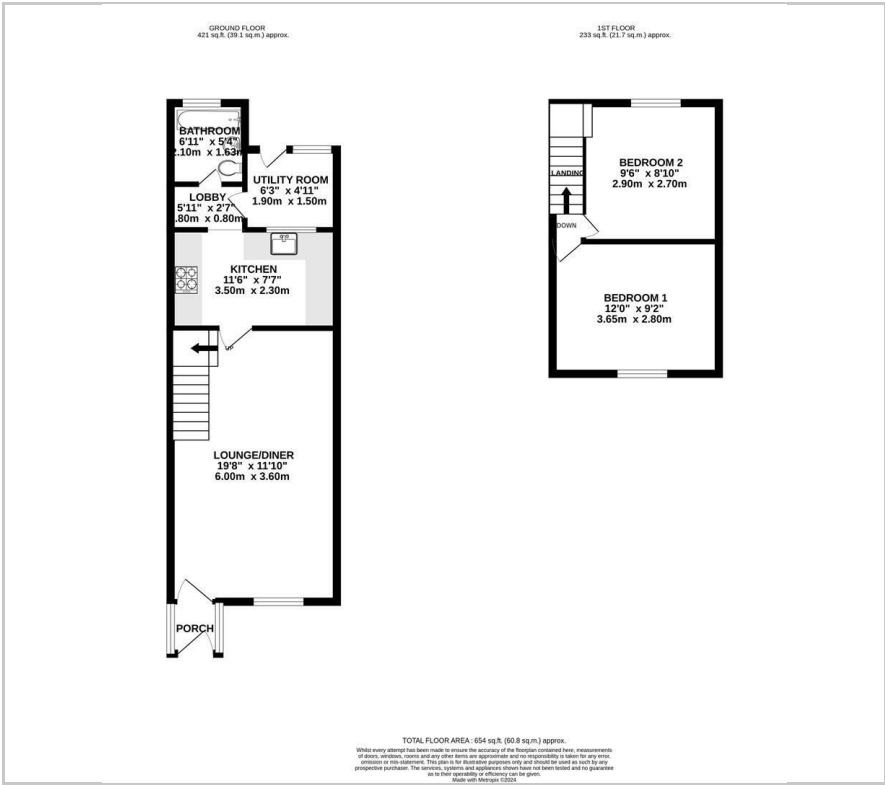
8 Carisbrook Terrace

Chiseldon, Swindon, SN4 0LW

Guide Price £200,000



Floor Plan



- TWO DOUBLE BEDROOMS
- SPACIOUS OPEN PLAN LOUNGE/DINER
- GOOD SIZE REAR GARDEN
- KITCHEN/BREAKFAST ROOM
- UTILITY ROOM
- GAS CENTRAL HEATING (COMBI BOILER)
- DOUBLE GLAZING
- IDEAL FIRST TIME BUY

**** NO ONWARD CHAIN **** Nestled in the charming village of Chiseldon, Swindon, this delightful cottage on Carisbrook Terrace offers a perfect blend of comfort and character. The cottage has been extended to the ground floor and offers a spacious lounge/diner, a well appointed kitchen/breakfast room, a useful utility room with space and plumbing for washing machine and door to rear garden and a ground floor bathroom. To the first floor there are two double bedrooms. The good size rear garden is mainly laid to lawn with a patio/sun terrace. On street parking is available in the street.

Chiseldon is known for its picturesque surroundings and community spirit, making it an attractive location for those who appreciate a tranquil lifestyle. The immediate area boasts a thriving pub, local farm shop, convenience store, church and a garage. There is also a well regarded primary school.

Viewing

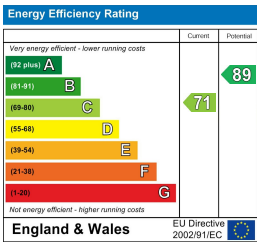
Please contact our Chappells Estate Agents Sales Office on 01793 618080 if you wish to arrange a viewing appointment for this property or require further information.

These particulars, whilst believed to be accurate are set out as a general outline only for guidance and do not constitute any part of an offer or contract. Intending purchasers should not rely on them as statements of representation of fact, but must satisfy themselves by inspection or otherwise as to their accuracy. No person in this firm's employment has the authority to make or give any representation or warranty in respect of the property.

Area Map



Energy Efficiency Graph



35-36 Newport Street, Swindon, Wiltshire, SN1 3DR

01793 618080

sales@chappells.uk.com ww.chappells.uk.com

