



ESTATE AGENTS

Sales • Lettings • New Homes



10 Hollinsmoor

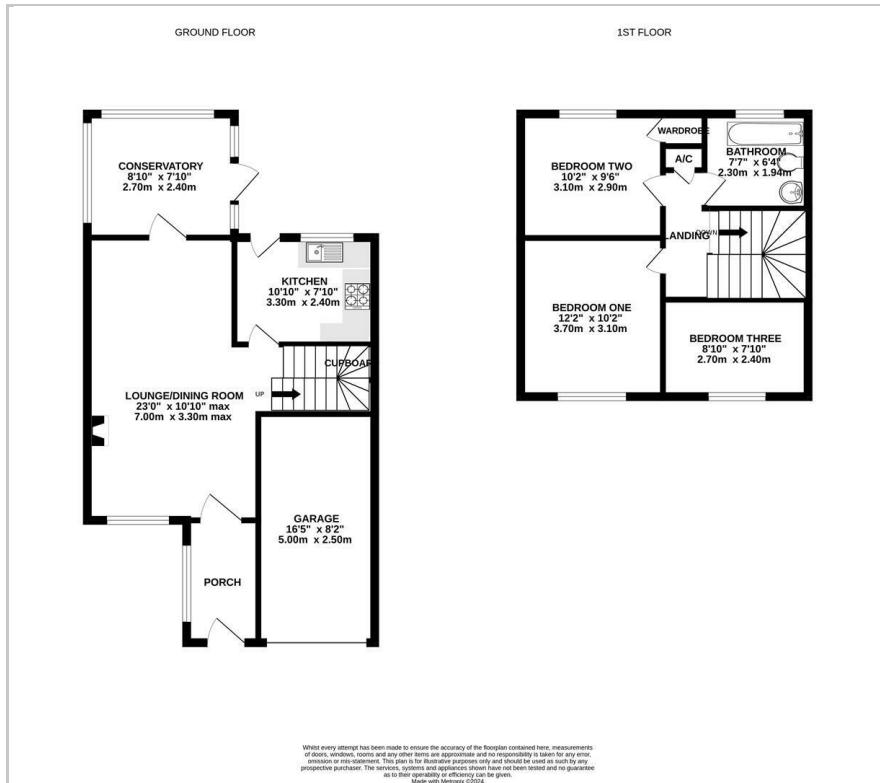
, Swindon, SN3 6NJ

Asking Price £320,000





## Floor Plan



- NO ONWARD CHAIN
- SOUGHT AFTER CUL-DE-SAC
- THREE BEDROOMS
- MODERN BATHROOM
- ENCLOSED WELL STOCKED REAR GARDEN
- DETACHED HOUSE
- CONSERVATORY
- GARAGE
- PRIVATE & SUNNY REAR GARDEN

**\*\* NO ONWARD CHAIN \*\*UNEXPECTEDLY BACK ON THE MARKET\*\***Chappells are pleased to offer for sale this well presented detached house situated in a sought after cul-de-sac in Liden. The property overlooks attractive green space to the rear and enjoys pleasant views. This lovely family home has been beautifully maintained and offers a spacious extended hall, lounge/diner, kitchen and a conservatory with door to rear garden. To the first floor there are three good size bedrooms and a modern bathroom. There is a delightful enclosed rear garden which offers much privacy and is mainly laid to lawn with a patio. Side access leads to the front of the property where there is a single garage with electric door and driveway parking for two cars. Don't miss the opportunity to make this delightful house your new home. Contact the sole selling agents SPECIALISING in EAST SWINDON NOW to book a viewing today!

## Viewing

Please contact our Chappells Estate Agents Sales Office on 01793 618080 if you wish to arrange a viewing appointment for this property or require further information.

These particulars, whilst believed to be accurate are set out as a general outline only for guidance and do not constitute any part of an offer or contract. Intending purchasers should not rely on them as statements of representation of fact, but must satisfy themselves by inspection or otherwise as to their accuracy. No person in this firm's employment has the authority to make or give any representation or warranty in respect of the property.

35-36 Newport Street, Swindon, Wiltshire, SN1 3DJ

01793 6180

sales@chappells.uk.com ww.chappells.uk.com



## Area Map



## Energy Efficiency Graph

