

Chappells



ESTATE AGENTS

Sales • Lettings • New Homes



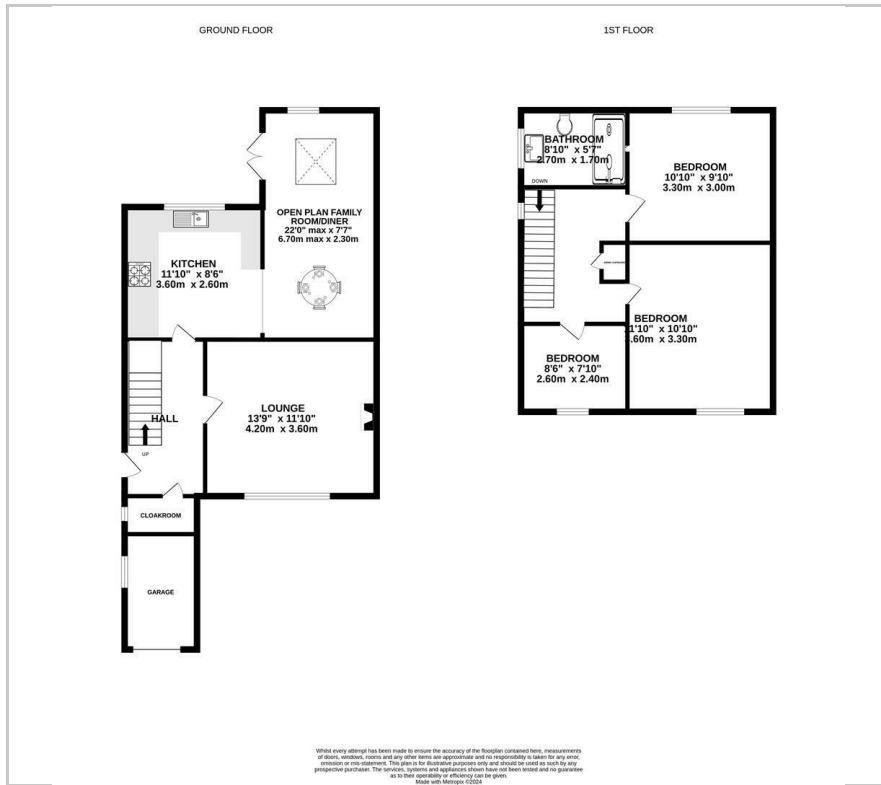
66 Parsons Way

Royal Wootton Bassett, Swindon, SN4 8DF

Guide Price £375,000



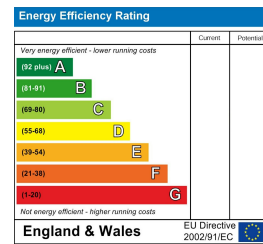
Floor Plan



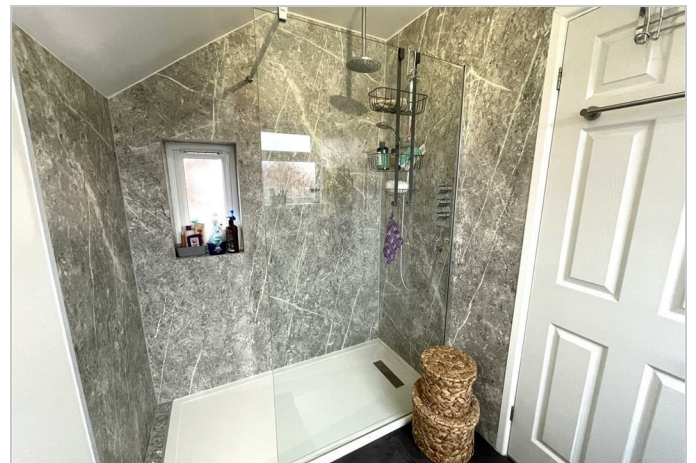
Area Map



Energy Efficiency Graph



NEW INSTRUCTION Chappells Estate Agents are pleased to offer for sale this extended three bedroom semi detached house situated in a popular residential area in Royal Wootton Bassett. This lovely family home has been improved and extended by the current owners over the years and offers a good size lounge, a cloakroom, a bright and spacious open plan kitchen/dining room which opens to a family room with a velux roof light and French doors to the rear garden. To the first floor there are three bedrooms and a smart refitted family bathroom with large walk-in shower. Situated on a corner plot, the good size garden wraps around the side and rear and offers a good deal of sun and privacy. There is a single garage and driveway parking for up to three cars. Potential to extend further.



Viewing

Please contact our Chappells Estate Agents Sales Office on 01793 618080 if you wish to arrange a viewing appointment for this property or require further information.



These particulars, whilst believed to be accurate are set out as a general outline only for guidance and do not constitute any part of an offer or contract. Intending purchasers should not rely on them as statements of representation of fact, but must satisfy themselves by inspection or otherwise as to their accuracy. No person in this firm's employment has the authority to make or give any representation or warranty in respect of the property.

35-36 Newport Street, Swindon, Wiltshire, SN1 1NP

01793 618080

sales@chappells.uk.com ww.chappells.uk.com

