

Chappells

Estate Agents



Greenbridge Square Covingham

From £293,950



Chappells

Estate Agents



Contact the name you can trust | 01793 618080

*****MOVE WITH A 5% DEPOSIT USING HELP TO BUY***360 VIRTUAL TOUR*** An attractive 3 bedroom Mid-terraced family home with off road parking & rear enclosed garden. The ground floor offers a contemporary dining room with French doors leading to the garden, a spacious light and airy lounge as well as a downstairs cloakroom. The first floor you will find a double and single bedroom and family bathroom with a lobby area that leads to the second floor. The top floor features a large master bedroom with its own en-suite shower room. **** HAVE A PROPERTY TO SELL **** Contact us now to discuss the "EASYMOVE" option, let Keepmoat Homes and Chappells Estate Agents help you sell your home. Contact the sole appointed agents for further details.**

Ground Floor

Kitchen/Dining Room 14' 9" x 9' 0" (4.49m x 2.74m)

Lounge 11' 8" x 12' 9" (3.55m x 3.88m)

WC 4' 11" x 3' 2" (1.50m x 0.96m)

First Floor

Bedroom Two 14' 9" x 8' 9" (4.49m x 2.66m)

Bedroom Three 8' 1" x 9' 6" (2.46m x 2.89m)

Lobby 6' 4" x 5' 10" (1.93m x 1.78m)

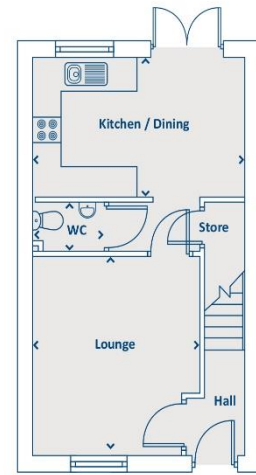
Bathroom 8' 1" x 6' 8" (2.46m x 2.03m)

Second Floor

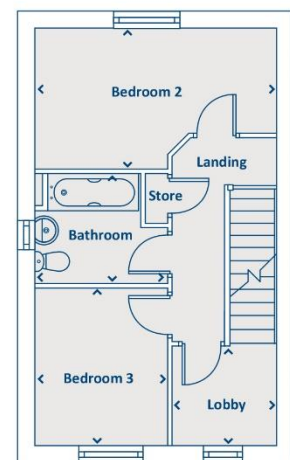
Bedroom One 14' 9" x 18' 10" (4.49m x 5.74m)

En-Suite 7' 9" x 5' 5" (2.36m x 1.65m)

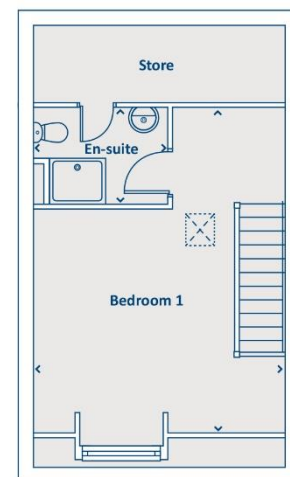
Overall 1045 SQ FT



GROUND FLOOR



FIRST FLOOR



SECOND FLOOR

MONEY LAUNDERING REGULATIONS 2003 - Intending purchasers will be asked to produce identification documentation at a later stage and we would ask for your co-operation in order that there will be no delay in agreeing the sale. Chappells Estate Agents & their clients give notice that: 1. These sales and particulars do not constitute any part of an offer of contract, and are for the guidance of prospective purchasers only and should not be relied on as statements of fact. 2. No representations are made in these particulars as to the condition of the property or as to whether any service or facilities are in good working order. 3. All Measurements are approximate