



Upland Drive, Derriford, Plymouth
Plymouth

Guide Price £350,000

A spacious three bedroom linked detached property situated in a highly sought after residential location offering easy access to local amenities and enjoying far reaching views towards Cornwall from the rear elevation. The living accommodation which is well presented throughout in tasteful neutral colours is arranged over two levels comprising; entrance porch, entrance hall, lounge/diner, modern fitted kitchen with integrated appliances, snug and cloakroom on the ground floor. On the first floor the landing leads to three bedrooms and a modern family bathroom. Externally there are well maintained front and rear gardens, garage and driveway. The property also benefits from PVCu double glazing and gas central heating. An internal viewing is highly recommended to truly appreciate this wonderful family home.

DERRIFORD

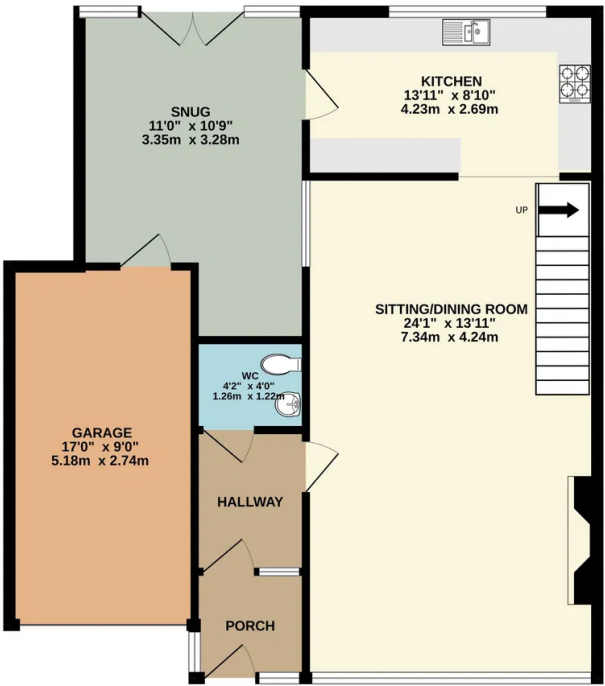
Derriford is well placed for all local amenities and is approximately four miles north of Plymouth city centre. Derriford is an established residential area offering a variety of local services, amenities and restaurants lying within close proximity of Derriford Hospital, Derriford Business Park and The University of St Mark and St John. Boasting convenient access to major routes in all directions including the centre and north towards Dartmoor and Tavistock providing a variety of recreational activities.

UTILITIES

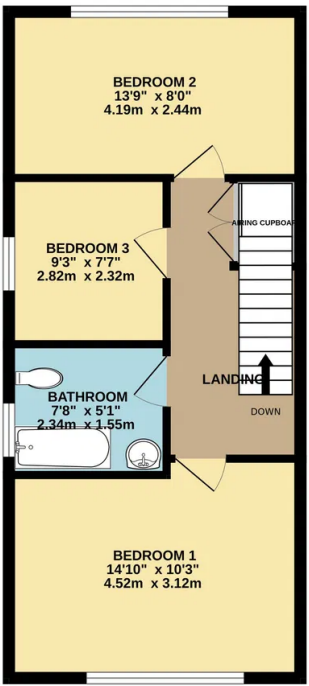
Mains water, gas, electricity and mains drainage, mobile coverage good, broadband connection ADSL, FTTC, FTTP.



GROUND FLOOR



1ST FLOOR



Whilst every attempt has been made to ensure the accuracy of the floorplan contained here, measurements of doors, windows, rooms and any other items are approximate and no responsibility is taken for any error, omission or mis-statement. This plan is for illustrative purposes only and should be used as such by any prospective purchaser. The services, systems and appliances shown have not been tested and no guarantee as to their operability or efficiency can be given.
Made with Metropix ©2025

OUTGOINGS PLYMOUTH

We understand the property is in band ' D ' for council tax purposes and the amount payable for the year 2025/2026 is £2325.42 (by internet enquiry with Plymouth City Council). These details are subject to change.

UTILITIES

Mains water, gas, electricity and mains drainage, mobile coverage good, broadband connection ADSL, FTTC, FTTP.

ACCOMMODATION

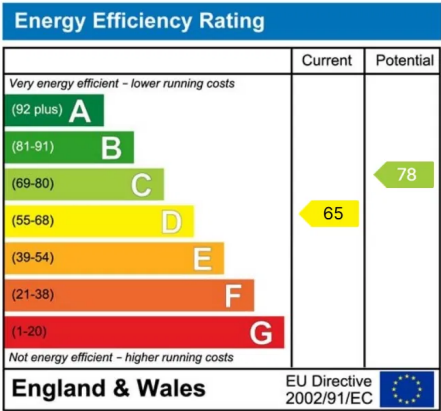
Reference made to any fixture, fittings, appliances or any of the building services does not imply that they are in working order or have been tested by us. Purchasers should establish the suitability and working condition of these items and services themselves.

FLOOR PLANS & ENERGY PERFORMANCE CERTIFICATES

These Floorplans are set out as a guideline only and should not be relied upon as a representation of fact. They are intended for information purposes only and are not to scale. Energy Performance Certificates are produced by an external source and Lawson do not accept responsibility for their accuracy. Copyright Lawson 2023.

BUYERS INFORMATION

Due to the Money Laundering Regulations 2019, we are required to confirm the identity of all our prospective buyers. We therefore charge buyers an AML and administration fee of £60 including VAT for the transaction (not per person). We carry this out through a secure platform to protect your data. Please note we are unable to issue a memorandum of sale until the checks are complete. Lawson themselves on behalf for the sellers/landlords of this property whose agents they are given notice that :- (1) These particulars are set out as a general outline for the guidance of prospective buyers/tenants and shall not form the whole or any part of a contract. (2) All descriptions, dimensions and areas, references to condition and necessary permissions for use and occupation and other details are given in good faith and believed to be materially correct but any intending buyer/tenant should not rely on them as statements or representations of fact but must satisfy themselves by inspection or otherwise as to the correctness of each of them. (3) No person in the employ of Lawson has any authority to make or give any representation or warranty at all about the property. (4) No responsibility can be accepted for any expenses incurred by a prospective buyer/tenant in inspecting this property if it is sold, let or withdrawn.





Lawson Property

3-5 Woolwell Crescent Plymouth Devon PL6 7RB

01752 791333

plymouth@lawsonproperty.co.uk

<https://lawsonproperty.co.uk/>

