

PETER LARGE

ESTATE AGENTS

3 Tan Yr Wylfa, Abergele, Conwy, LL22 7DX

£289,950

2 1 1



Located in a quiet cul de sac within the popular woodlands estate, this lovely bungalow offers pleasant accommodation which is ready to move into. With good size lounge, spacious kitchen diner, conservatory, two bedrooms and shower room, all within a neat plot and having lawn gardens to the front and rear. Close to Abergele town with its many amenities including library, doctor's surgery and Tesco supermarket. The beach at Pensarn is within two miles.

abergele@peterlarge.com

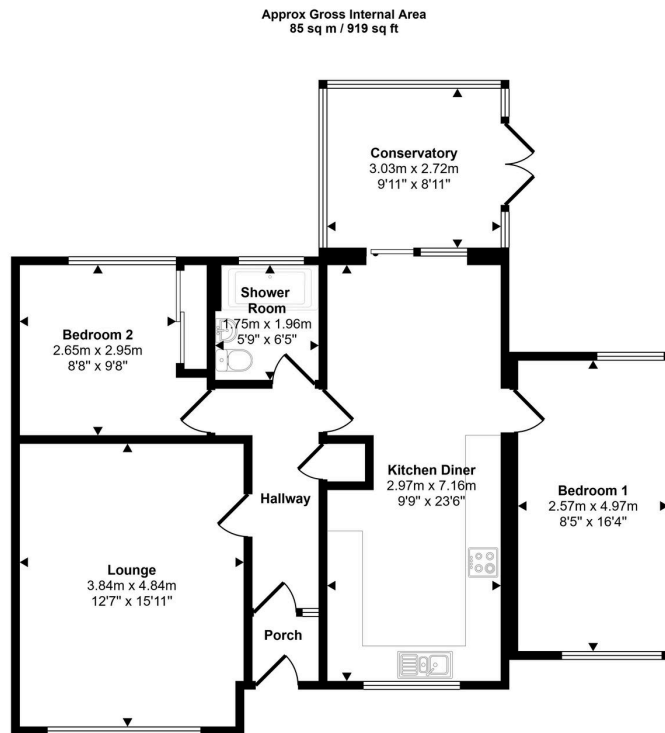
| 01745 825511

| www.peterlarge.com

45-47 MARKET STREET, ABERGELE, CONWY, LL2 7AF

Key Features

- Detached bungalow
- Private south facing garden
- Large kitchen diner
- Conservatory
- Two double bedrooms
- Driveway parking
- Quiet cul de sac
- Freehold
- Council tax band - E
- EPC rating - C



Floorplan

This floorplan is only for illustrative purposes and is not to scale. Measurements of rooms, doors, windows, and any items are approximate and no responsibility is taken for any error, omission or mis-statement. Icons of items such as bathroom suites are representations only and may not look like the real items. Made with Made Snappy 360.

CONSUMER PROTECTION REGULATIONS 2008 AND THE BUSINESS PROTECTION FROM MISLEADING MARKETING REGULATIONS 2008

These particulars, whilst believed to be accurate, are set out for guidance only and do not constitute any part of an offer or contract. Prospective purchasers or tenants should not rely on these particulars as statement or representation of fact, but must satisfy themselves by inspection or otherwise as to their accuracy. No person in the employment of PETER LARGE Estate Agents has the authority to make or give any representation or warranty in relation to the property. Room sizes are approximate and all comments are of the opinion of PETER LARGE Estate agents having carried out a walk through inspection. These sales particulars are prepared under the consumer regulations 2008 and are governed by the business from misleading marketing regulations 2008.