

27 Bryn Twr, Abergele, LL22 8DD

Guide Price £294,950

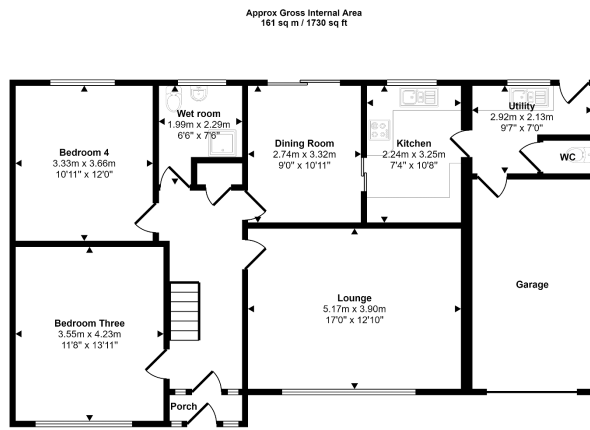
🛏️ 4 🚿 1 🚗 1



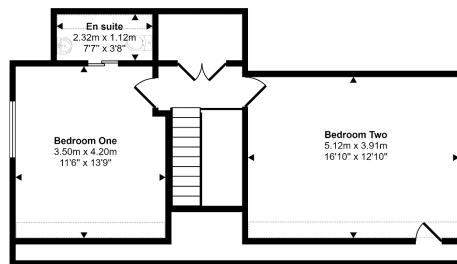
A substantial and versatile dormer bungalow with the bonus of bedrooms, both upstairs and down! This property really is a blank canvas, your opportunity to enhance and create a family home. The spacious accommodation offers hallway, lounge, kitchen plus utility, dining room, wet room, two further reception rooms/downstairs bedrooms, landing and two bedrooms upstairs, one with ensuite. Double glazing and gas central heating is fitted throughout and the property stands in a generous corner plot with an integral single garage and lawn gardens. Bryn Twr is within walking distance of the town centre and there are countryside walks and the local golf course nearby. Available now with no forward chain.

Key Features

- Detached dormer bungalow
- Spacious and versatile
- Sought after location
- Kitchen plus utility
- Four bedrooms
- Surrounding gardens
- Single integral garage
- Freehold
- EPC rating - D
- Council tax band - E



Ground Floor
Approx 106 sq m / 1136 sq ft



First Floor
Approx 55 sq m / 595 sq ft



Denotes head height below 1.5m

This floorplan is only for illustrative purposes and is not to scale. Measurements of rooms, doors, windows, and any items are approximate and no responsibility is taken for any error, omission or mis-statement. Items of items such as bathroom suites are representations only and may not look like the real items. Made with Made Snappy 360.