

## 25 Wentworth Avenue, Abergele, Conwy, LL22

£199,950

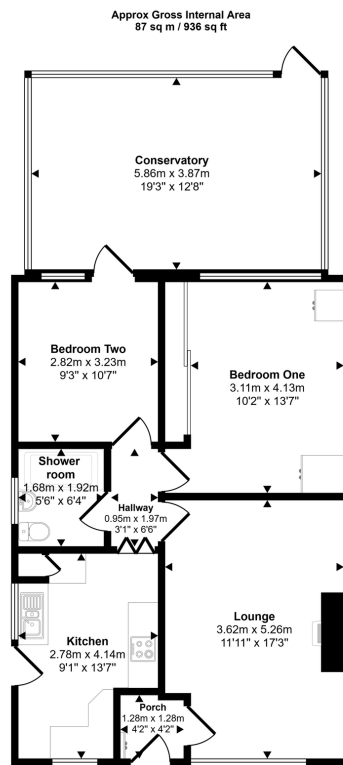
🛏 2 🚿 1 🛋 1



Offered with no forward chain is this well presented two bedroom semi detached bungalow in a popular location in the market town of Abergele with good access to amenities and the sea front. The well proportioned accommodation comprises porch, hall, lounge, kitchen, two bedrooms, shower room and conservatory. The property benefits from off-street parking, carport with gardens to the front and rear. Secured with a gate, the rear garden is private and low maintenance with enclosed timber fencing. The beach and promenade are located nearby and the A55 expressway is easily accessible.

## Key Features

- No onward chain
- Two Bedrooms
- Popular location
- Driveway parking
- EPC rating - TBC
- Semi detached bungalow
- Large conservatory
- Low maintenance garden
- Council tax band - C
- Tenure - Freehold



Floorplan

This floorplan is only for illustrative purposes and is not to scale. Measurements of rooms, doors, windows, and any items are approximate and no responsibility is taken for any error, omission or mis-statement. Icons of items such as bathroom suites are representations only and may not look like the real items. Made with Made Snappy 360.

### CONSUMER PROTECTION REGULATIONS 2008 AND THE BUSINESS PROTECTION FROM MISLEADING MARKETING REGULATIONS 2008

These particulars, whilst believed to be accurate, are set out for guidance only and do not constitute any part of an offer or contract. Prospective purchasers or tenants should not rely on these particulars as statement or representation of fact, but must satisfy themselves by inspection or otherwise as to their accuracy. No person in the employment of PETER LARGE Estate Agents has the authority to make or give any representation or warranty in relation to the property. Room sizes are approximate and all comments are of the opinion of PETER LARGE Estate agents having carried out a walk through inspection. These sales particulars are prepared under the consumer regulations 2008 and are governed by the business from misleading marketing regulations 2008.