

26 Wentworth Avenue, Abergele, Conwy, LL22

£194,950

2 1 1

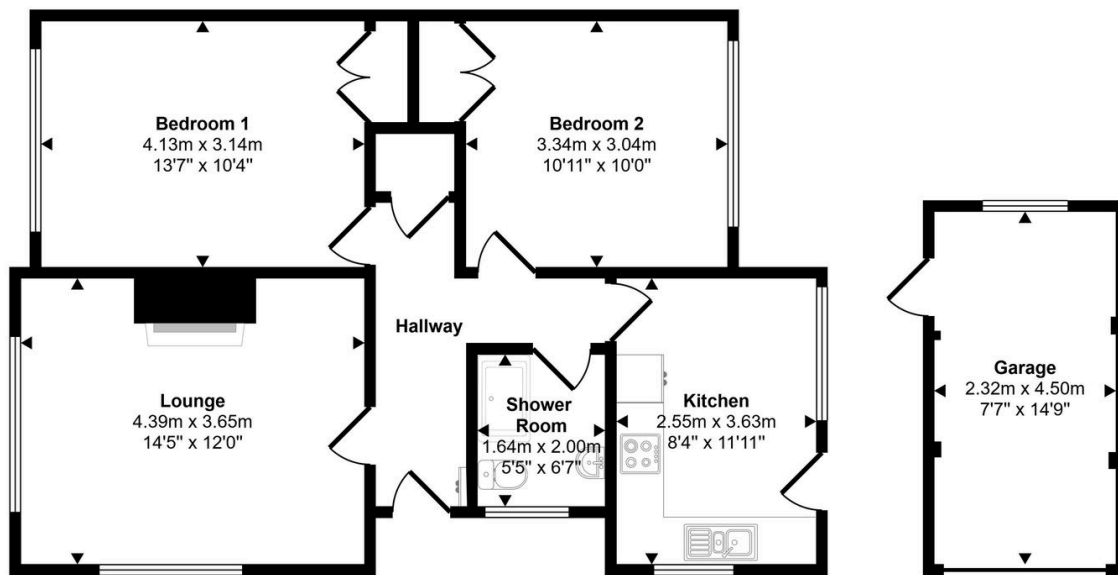


Situated on a large corner plot within a quiet estate, sits this two bedroom, semi detached bungalow. With a kitchen/diner, dual aspect lounge, modern shower room and beautiful front and rear gardens. The property benefits from a detached garage, resin driveway providing ample parking, gas central heating and double glazing throughout. The bungalow is located with the popular town of Abergele with its high street, supermarket and leisure facilities all within walking distance. There are regular bus services and the A55 expressway can be accessed easily from here.

Key Features

- Semi Detached Bungalow
- Two double bedrooms
- Resin driveway
- Private rear garden
- Freehold
- Large corner plot
- Modern shower room
- Detached garage
- EPC- D
- Council Tax - C

Approx Gross Internal Area
74 sq m / 793 sq ft



Floorplan
Approx 63 sq m / 680 sq ft

Garage
Approx 10 sq m / 112 sq ft

This floorplan is only for illustrative purposes and is not to scale. Measurements of rooms, doors, windows, and any items are approximate and no responsibility is taken for any error, omission or mis-statement. Icons of items such as bathroom suites are representations only and may not look like the real items. Made with Made Snappy 360.