

Llys Coed, Tan Y Gopa, Abergele, Conwy, LL22 8DS

£499,950

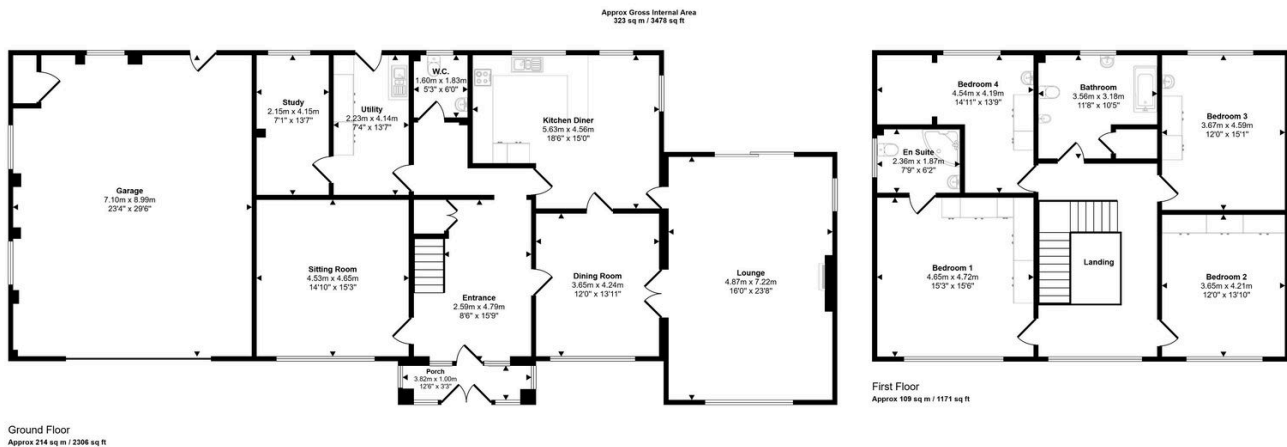
🛏 4 🍷 3 🛋 3



A prestigious detached house, set in an elevated position with far reaching views, adjacent to Abergele Golf Club. This superior residence will attract much interest and offers well planned and spacious accommodation including an impressive entrance hall, three reception rooms, kitchen/diner, utility and study. There are four bedrooms, one with an en suite bathroom, plus a large family bathroom to the first floor. Particular features within the versatile accommodation are original ornate coving to some rooms and beautiful stained glass windows. The property stands in good sized lawn gardens with a driveway providing ample parking and a double garage.

Key Features

- Superior detached house
- Three reception rooms
- Four bedrooms
- Double garage
- Council tax band - G
- Views over Abergele to the coast
- Kitchen and utility
- Enclosed gardens
- EPC rating - E
- Freehold



CONSUMER PROTECTION REGULATIONS 2008 AND THE BUSINESS PROTECTION FROM MISLEADING MARKETING REGULATIONS 2008

These particulars, whilst believed to be accurate, are set out for guidance only and do not constitute any part of an offer or contract. Prospective purchasers or tenants should not rely on these particulars as statement or representation of fact, but must satisfy themselves by inspection or otherwise as to their accuracy. No person in the employment of PETER LARGE Estate Agents has the authority to make or give any representation or warranty in relation to the property. Room sizes are approximate and all comments are of the opinion of PETER LARGE Estate agents having carried out a walk through inspection. These sales particulars are prepared under the consumer regulations 2008 and are governed by the business from misleading marketing regulations 2008.