

Ysgubor Wen, Rhyd Y Foel, Conwy, LL22 8DU

£650,000

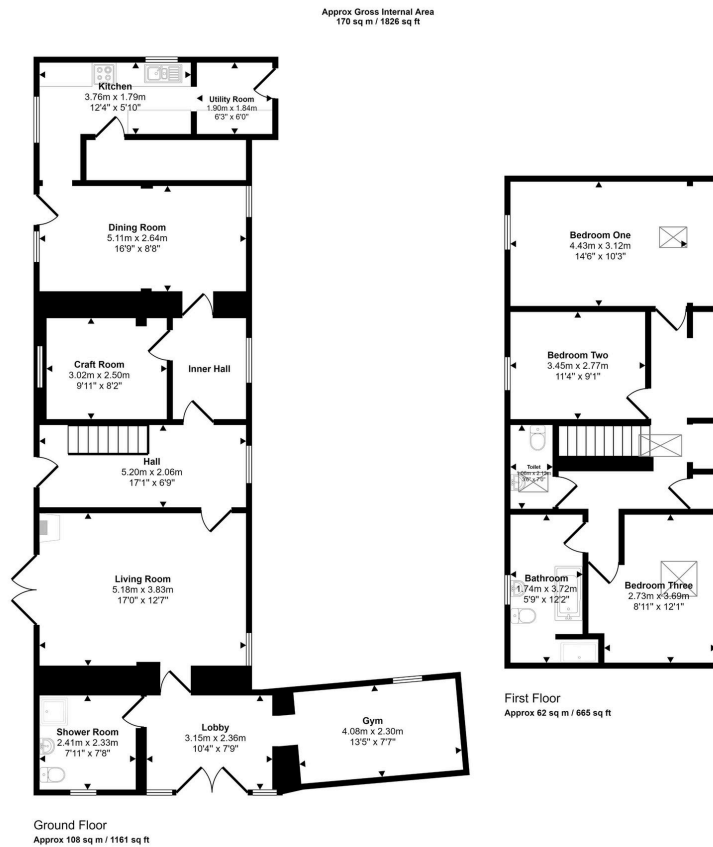
🛏 3 🍷 2 🛋 3



A most delightful rural cottage dating back to the 1500's and benefitting from a two acre plot, a variety of versatile outbuildings including kennels, stunning panoramic countryside views and the possibility of a building plot, subject to the relevant planning permissions. Ideally located just a few miles from the coast and A55 Expressway, on the periphery of Rhyd Y Foel village and set back from the lane, down a sweeping track. The property has a spacious interior with several reception rooms, kitchen plus utility, downstairs shower room, three double bedrooms and a family bathroom, all of which are beautifully presented and 'ready to move into.' This is a superb opportunity and viewings will not disappoint.

Key Features

- Freehold
- Council tax band - E
- EPC rating - E
- Peaceful location but not isolated
- Three double bedrooms
- Ample parking
- Various outbuildings with potential
- Circa 2.64 acre plot
- Glorious countryside views
- Rural detached cottage



CONSUMER PROTECTION REGULATIONS 2008 AND THE BUSINESS PROTECTION FROM MISLEADING MARKETING REGULATIONS 2008

These particulars, whilst believed to be accurate, are set out for guidance only and do not constitute any part of an offer or contract. Prospective purchasers or tenants should not rely on these particulars as statement or representation of fact, but must satisfy themselves by inspection or otherwise as to their accuracy. No person in the employment of PETER LARGE Estate Agents has the authority to make or give any representation or warranty in relation to the property. Room sizes are approximate and all comments are of the opinion of PETER LARGE Estate agents having carried out a walk through inspection. These sales particulars are prepared under the consumer regulations 2008 and are governed by the business from misleading marketing regulations 2008.