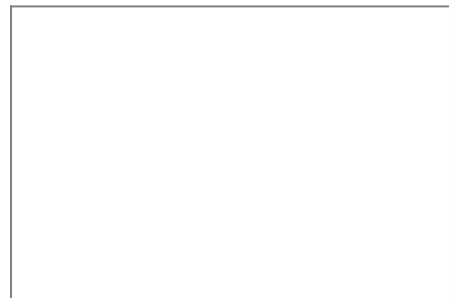


## Bee Bungalow, Market Street, Abergele, LL22 7AH

Offers Over £300,000

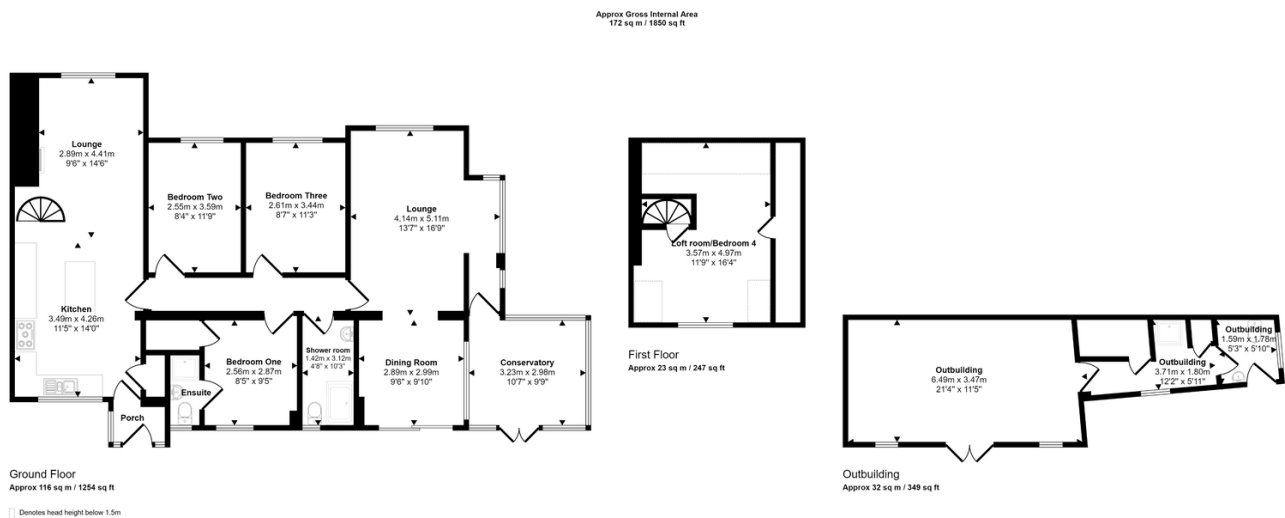
4 1 2



Prepare to be impressed with this fully refurbished bungalow, set in the heart of Abergele! This detached property has been improved to a high standard in recent years and now offers superb spacious accommodation including two reception rooms, conservatory, a beautifully fitted kitchen with an island, modern shower room and four bedrooms, one with en suite and one in the roof space. The large gardens are fully enclosed and there are several outbuildings incorporating a workshop, sauna and utility room. A hidden gem!

## Key Features

- Spacious detached bungalow
- Two lounges
- Kitchen with island
- Four bedrooms
- EPC rating - E
- Fully refurbished
- Four bedrooms
- Outbuildings inc workshop
- Council tax band - D
- Freehold



### CONSUMER PROTECTION REGULATIONS 2008 AND THE BUSINESS PROTECTION FROM MISLEADING MARKETING REGULATIONS 2008

These particulars, whilst believed to be accurate, are set out for guidance only and do not constitute any part of an offer or contract. Prospective purchasers or tenants should not rely on these particulars as statement or representation of fact, but must satisfy themselves by inspection or otherwise as to their accuracy. No person in the employment of PETER LARGE Estate Agents has the authority to make or give any representation or warranty in relation to the property. Room sizes are approximate and all comments are of the opinion of PETER LARGE Estate agents having carried out a walk through inspection. These sales particulars are prepared under the consumer regulations 2008 and are governed by the business from misleading marketing regulations 2008.