

PETER LARGE

ESTATE AGENTS

14 Bryntirion Terrace, Abergele, Conwy, LL22 7BG

£149,950

🛏 2 🚿 1 🛋 2

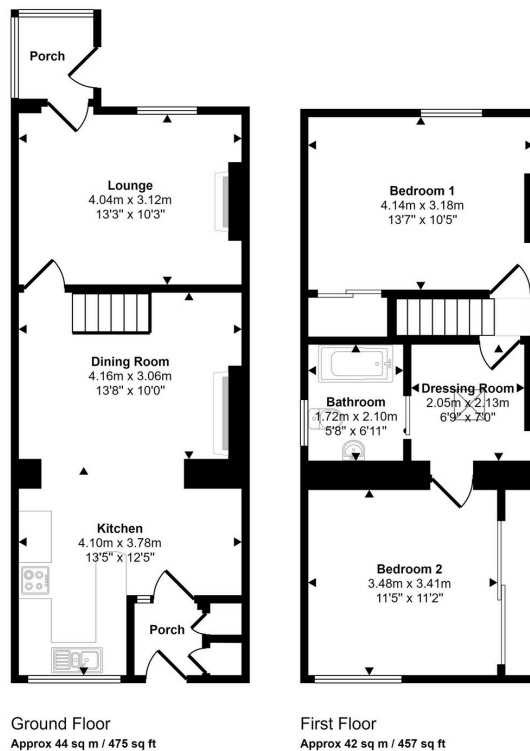


A charming end of terrace cottage in an elevated position within Abergele town centre, being conveniently located for shops, schools and leisure facilities. Just a short walk takes you into the main street where a variety of shops and restaurants can be found. This extended cottage, dating back to 1870, is surprisingly spacious with front porch, lounge, dining room, kitchen, two double bedrooms, dressing room/office and a bathroom. Now on the market for the first time in forty years and ideal for the first time buyer or investor.

Key Features

- End of terrace cottage
- Charm and character
- Extended to rear
- Separate dining room
- Two double bedrooms
- Central heating and uPVC double glazing
- Front & rear gardens
- Freehold
- Council tax band - B
- EPC rating - D

Approx Gross Internal Area
87 sq m / 932 sq ft



This floorplan is only for illustrative purposes and is not to scale. Measurements of rooms, doors, windows, and any items are approximate and no responsibility is taken for any error, omission or mis-statement. Icons of items such as bathroom suites are representations only and may not look like the real items. Made with Made Snappy 360.

CONSUMER PROTECTION REGULATIONS 2008 AND THE BUSINESS PROTECTION FROM MISLEADING MARKETING REGULATIONS 2008

These particulars, whilst believed to be accurate, are set out for guidance only and do not constitute any part of an offer or contract. Prospective purchasers or tenants should not rely on these particulars as statement or representation of fact, but must satisfy themselves by inspection or otherwise as to their accuracy. No person in the employment of PETER LARGE Estate Agents has the authority to make or give any representation or warranty in relation to the property. Room sizes are approximate and all comments are of the opinion of PETER LARGE Estate agents having carried out a walk through inspection. These sales particulars are prepared under the consumer regulations 2008 and are governed by the business from misleading marketing regulations 2008.