

## 11 Min Y Morfa, Towyn, Abergele, LL22 9LY

£229,950

🛏️ 4 🚿 2 🚗 2

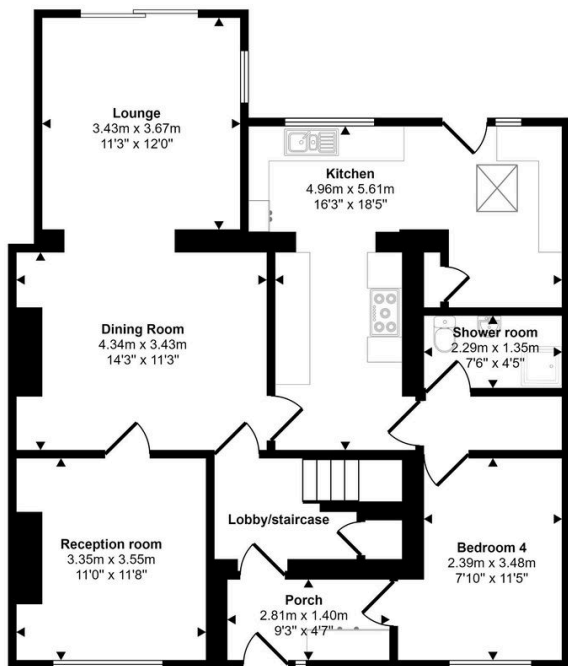


Perfect for a family home! This unique semi-detached house offering a spacious interior. Comprising of Four bedrooms, large kitchen with breakfast bar area, bright utility room, open plan lounge/dining room, further reception room to the front, Two bathrooms and a loft room. Outside the property benefits from a driveway ideal for off-street parking, rear garden mostly laid to lawn with a paved patio area and garage offering power and light. Situated in Towyn, a popular coastal town, within 2.6 miles of Abergele where various amenities can be found including local schools, public transport routes and Tesco Supermarket. Benefiting from lovely country walks and the A55 being easily accessed.

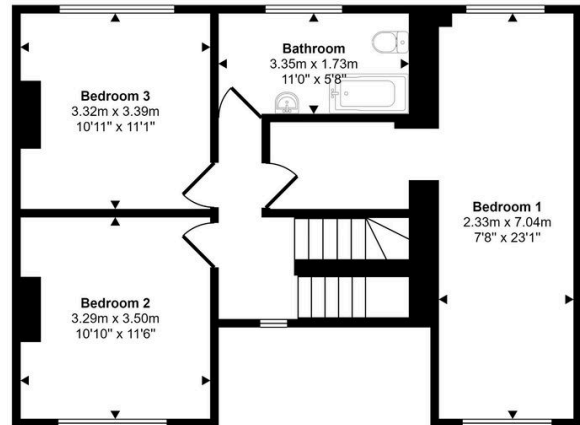
## Key Features

- Semi detached house
- Four Bedrooms
- Lounge/dining room
- Utility room
- EPC - D
- Perfect family home
- Driveway
- Kitchen with breakfast bar
- Tenure - Freehold
- Council Tax Band - C

Approx Gross Internal Area  
155 sq m / 1667 sq ft



Ground Floor  
Approx 94 sq m / 1012 sq ft



First Floor  
Approx 61 sq m / 656 sq ft

This floorplan is only for illustrative purposes and is not to scale. Measurements of rooms, doors, windows, and any items are approximate and no responsibility is taken for any error, omission or mis-statement. Icons of items such as bathroom suites are representations only and may not look like the real items. Made with Made Snappy 360.