

6 Bryn Derwen, Abergele, LL22 8DE

£259,950

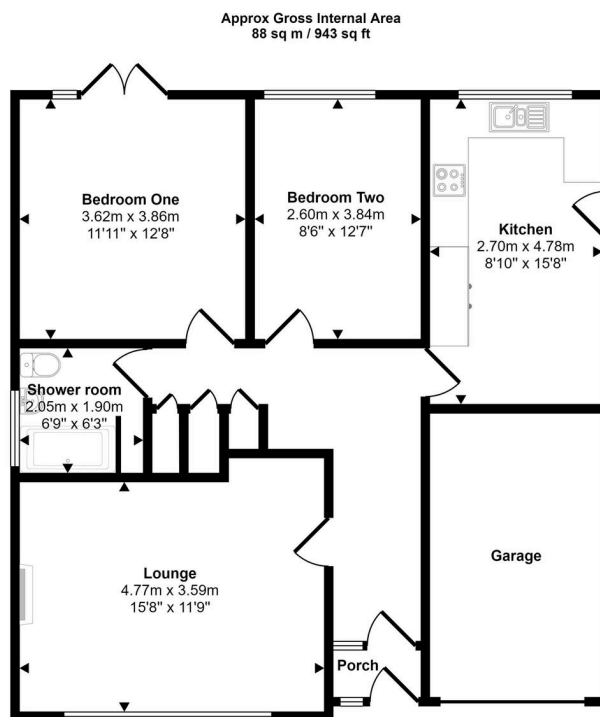
🛏️ 2 🚗 1 🚲 1



An immaculate detached bungalow situated in the popular coastal town of Abergele. Comprising of two double bedrooms, spacious lounge, bright kitchen, modernised shower room and large loft space with the potential of a conversion. Benefiting from a resin driveway perfect for off-street parking and a garage offering power, light and water. The south facing, low maintenance garden offers a lovely 'sun trap' space perfect to sit back and relax. Abergele town centre is less than a 10 minute walk away providing various amenities including cafes, shops, banking hub, chemist and Tesco Supermarket.

## Key Features

- Detached Bungalow
- Large loft space
- Driveway perfect for off-street parking
- Low maintenance gardens
- EPC - TBC
- Two Bedrooms
- Garage
- South facing garden
- Tenure - Freehold
- Council Tax Band - D



Floorplan

This floorplan is only for illustrative purposes and is not to scale. Measurements of rooms, doors, windows, and any items are approximate and no responsibility is taken for any error, omission or mis-statement. Icons of items such as bathroom suites are representations only and may not look like the real items. Made with Made Snappy 360.