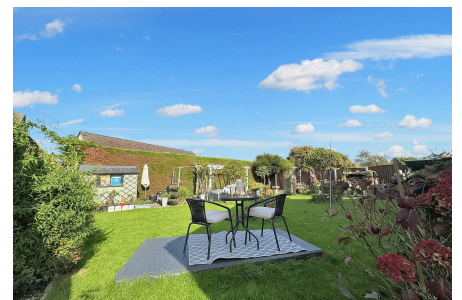
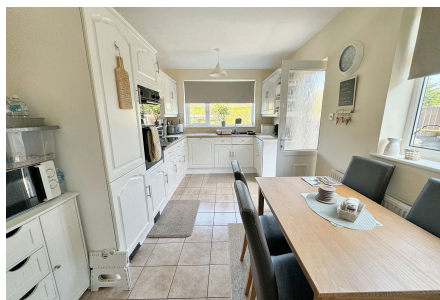


17 Bryn Twr, Abergele, LL22 8DD

£259,950

🛏️ 2 🚿 1 🚗 1

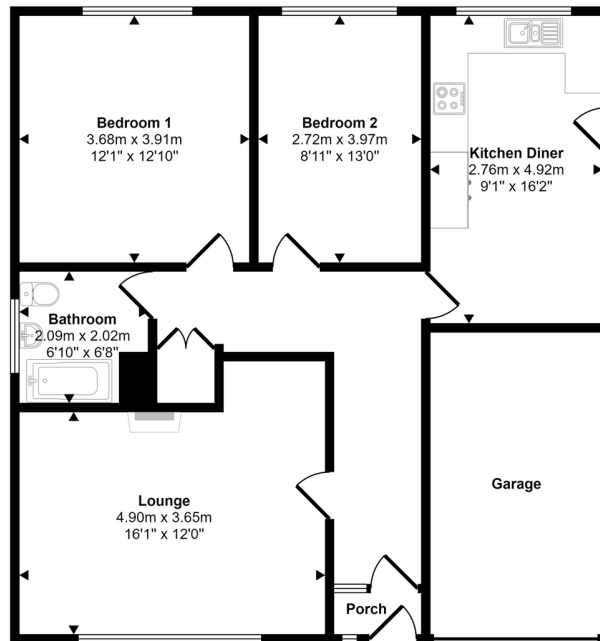


Located in a highly sought after location within a popular residential estate, this superb detached bungalow offers 'ready to move into' accommodation. The current owner has greatly improved and enhanced the bungalow and it now presents as a comfortable family home. Particular features include a recently fitted log burning stove to the lounge, contemporary internal doors, a large partly boarded loft room with potential to create further bedrooms plus a private rear garden with patio. The property is within walking distance of Abergele town centre, the golf club and leisure centre. Regular local bus services frequent the estate and countryside walks are on the doorstep.

Key Features

- Detached bungalow
- Lounge with log burning stove
- Two double bedrooms and loft space
- Level lawn gardens
- Council tax band - D
- Has undergone recent improvements
- Bright kitchen/diner
- Garage
- Freehold
- EPC rating - D

Approx Gross Internal Area
93 sq m / 1004 sq ft



Floorplan

This floorplan is only for illustrative purposes and is not to scale. Measurements of rooms, doors, windows, and any items are approximate and no responsibility is taken for any error, omission or mis-statement. Icons of items such as bathroom suites are representations only and may not look like the real items. Made with Made Snappy 360.