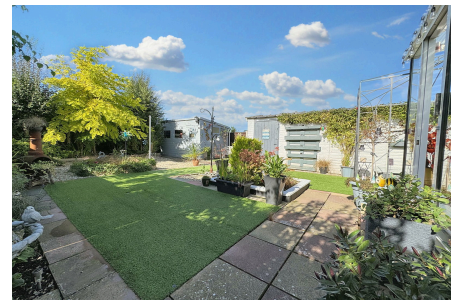


1 Sunningdale, Abergele, LL22 7UB

£239,950

🛏️ 2 🚿 1 🚗 1

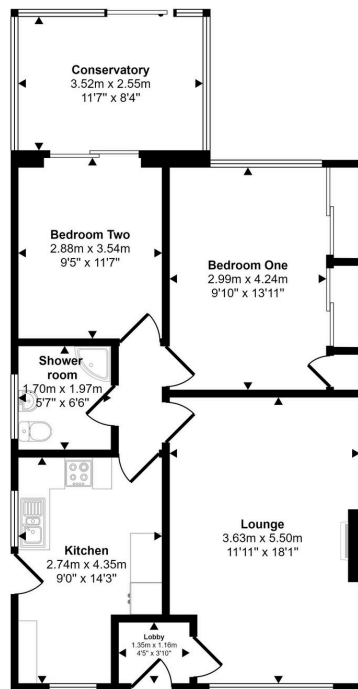


A lovely detached and well maintained bungalow, offering bright and cheerful accommodation consisting of lobby, lounge, kitchen diner, conservatory, two double bedrooms and shower room. Being ready to move into, with double glazing, central heating and charming easy to maintain gardens. This property is in a pleasant and level location, being close to town and Tesco, the beach and park. Abergele boasts a golf club, easy access to the A55 Expressway and a popular leisure centre.

Key Features

- Detached bungalow
- Large lounge
- Two bedrooms
- Highly sought after location
- EPC rating - TBC
- Ready to move into
- Conservatory
- Parking and detached garage
- Freehold
- Council tax band - D

Approx Gross Internal Area
75 sq m / 812 sq ft



Floorplan

This floorplan is only for illustrative purposes and is not to scale. Measurements of rooms, doors, windows, and any items are approximate and no responsibility is taken for any error, omission or mis-statement. Icons of items such as bathroom suites are representations only and may not look like the real items. Made with Made Snappy 360.