

48 Sea Road, Abergele, LL22 7LU

£385,000

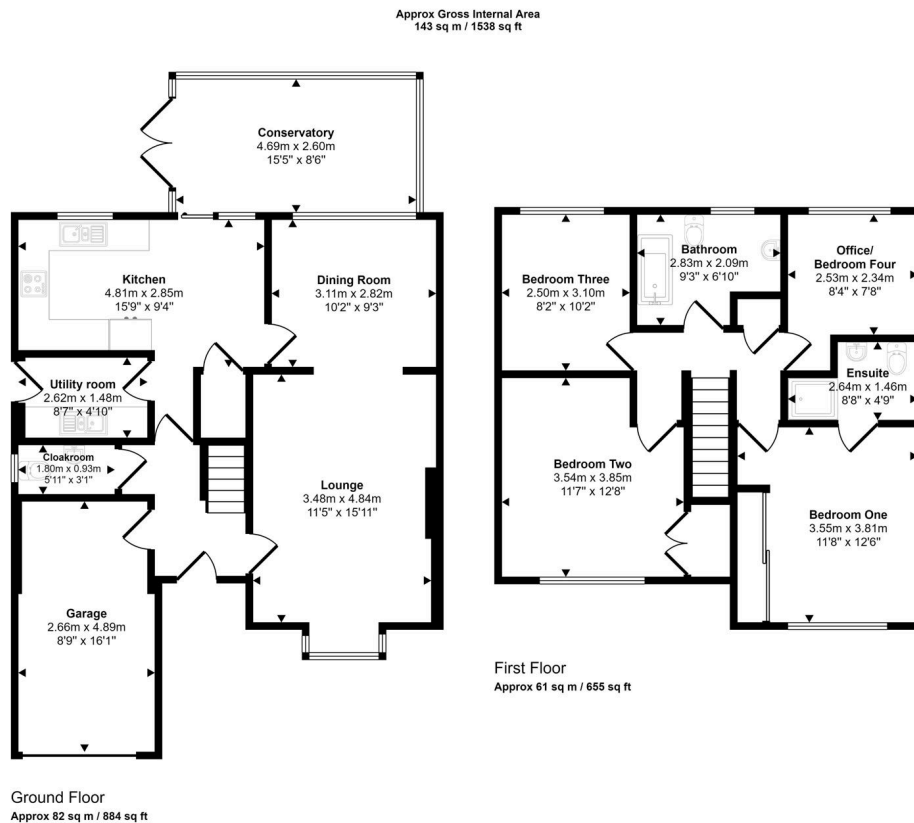
🛏️ 4 🍷 3 🚗 3



Perfect for a family home! This immaculate detached house offering picturesque views of Abergele Gwrych Castle. Comprising of Four bedrooms, one with ensuite, open plan lounge/ dining room, spacious kitchen, utility room, ground floor cloakroom, Three piece bathroom suite and conservatory. The large conservatory offers French doors opening out to the rear garden which provides a lovely paved patio area ideal for Al Fresco dining. Benefiting from a gated, bricked driveway providing space for off-street parking and a single garage. Located conveniently within a few minutes walk to the town centre of Abergele where various amenities can be found including a Tesco Supermarket, pharmacy and banking hub. Local schools and parks are also nearby along with easy access to public transport links. Viewings recommended!

Key Features

- Perfect family home
- Views of Abergele Gwyrch Castle
- Immaculate property
- Four bedrooms
- Lounge/dining room
- Bright conservatory
- Single garage
- Within minutes walk to Abergele town centre
- EPC - TBC
- Council tax band - F



This floorplan is only for illustrative purposes and is not to scale. Measurements of rooms, doors, windows, and any items are approximate and no responsibility is taken for any error, omission or mis-statement. Icons of items such as bathroom suites are representations only and may not look like the real items. Made with Made Snappy 360.