

Bedrock, Rhyd-y-Foel, Abergele, LL22 8DY

£575,000

🛏️ 6 🚿 2 🚗 1

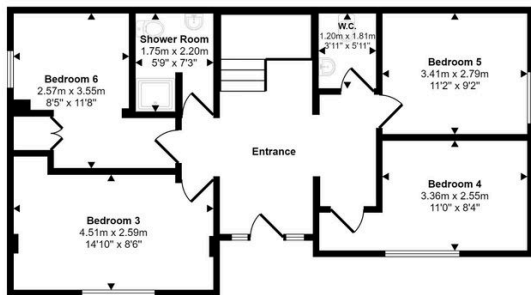


A spacious family house with glorious countryside and coastal views. Set in a solid, grand and elevated position as the name suggests, this attractive detached property is 'ready to move into' and really does offer space in abundance. The accommodation is both contemporary and stylish, with the extensive living quarters being upstairs to make the most of the beautiful panorama. Solid wood flooring and oak panel doors add to the charm. To the lower floor are a further four bedrooms plus a cloakroom and shower room. Externally there are landscaped, terraced gardens with different levels, plenty of level parking and a double garage. Set in this pretty rural village, just minutes from the A55 Expressway and coast. The towns of Abergele and Colwyn Bay are within a short drive and there are numerous country walks to enjoy.

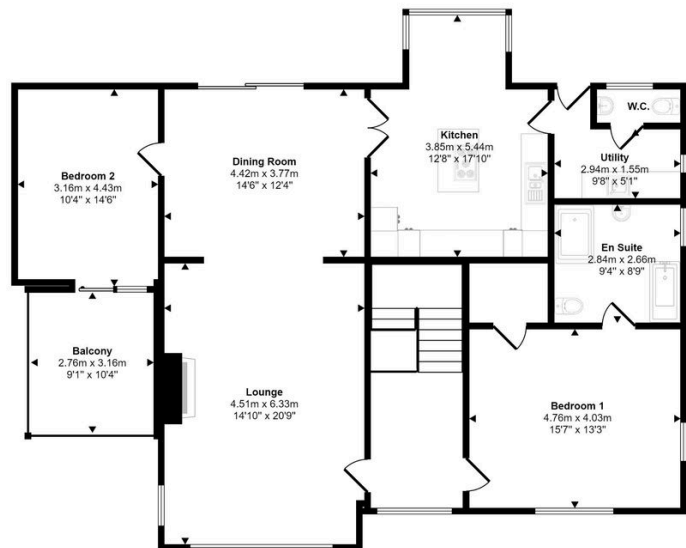
Key Features

- Large modern family house
- Versatile split level accommodation
- Six bedrooms
- Double garage
- Council tax band - G
- Panoramic views from all angles
- Kitchen with island
- En suite facility
- Freehold
- EPC rating - E

Approx Gross Internal Area
197 sq m / 2122 sq ft



Ground Floor
Approx 66 sq m / 710 sq ft



First Floor
Approx 131 sq m / 1411 sq ft

This floorplan is only for illustrative purposes and is not to scale. Measurements of rooms, doors, windows, and any items are approximate and no responsibility is taken for any error, omission or mis-statement. Icons of items such as bathroom suites are representations only and may not look like the real items. Made with Made Simpley 360.