

The Chalet, Cwyp Road, Rhyd-y-foel, Abergele, LL22 8NB

£425,000

4 2 2

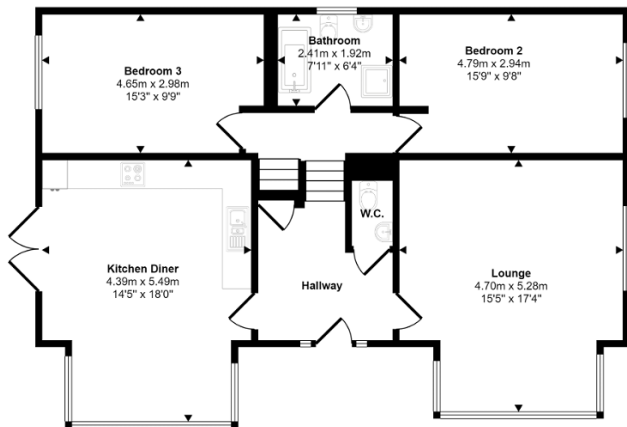


A well presented chalet style home, located via a gated entrance to a sweeping driveway. The property is nestled in a sheltered location, with stunning views of the nearby Welsh mountains and countryside. The interior is immaculately presented and consists of a large living room, sperate kitchen/dinner, both offering scenic views from their large bay windows. There are a further 4 double bedrooms and 2 bathrooms across the first and second floors. The extensive gardens have also been well tended and there are lawns to different levels, well stocked borders, mature trees and shrubs. The generously sized plot allows for ample parking facilities. For your chance to behold the beauty of this location please call Peter Large Abergele for viewing appointments.

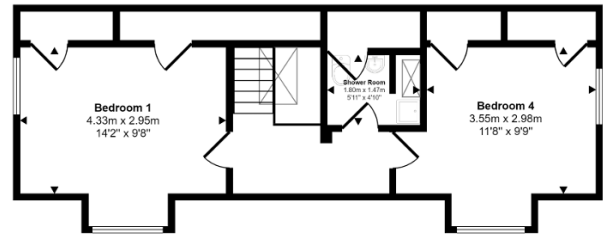
Key Features

- Detached chalet style home
- Gated driveway
- No onward chain
- Well presented interior
- Council Tax band - F
- Countryside views
- 4 large bedrooms
- Well maintained garden space
- EPC Rating - TBC
- Freehold

Approx Gross Internal Area
143 sq m / 1538 sq ft



Ground Floor
Approx 95 sq m / 1026 sq ft



First Floor
Approx 48 sq m / 513 sq ft

This floorplan is only for illustrative purposes and is not to scale. Measurements of rooms, doors, windows, and any items are approximate and no responsibility is taken for any error, omission or mis-statement. Icons of items such as bathroom suites are representations only and may not look like the real items. Made with Made Snappy 360.