

## 12 Marble Church Grove, Bodelwyddan, Denbighshire, LL18 5UP

£179,999

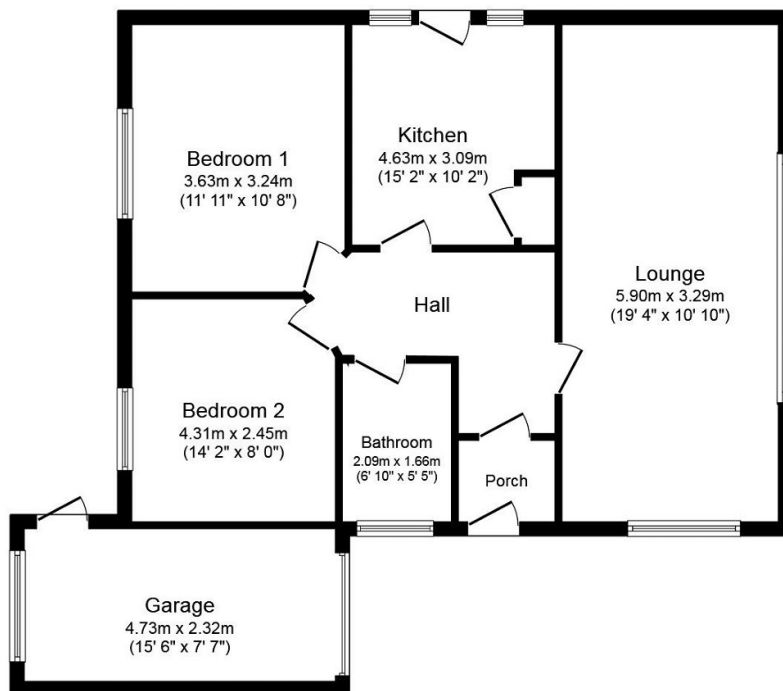
🛏️ 2 🍽️ 1 🚗 1



A detached bungalow located in a peaceful and quiet cul de sac in the popular village of Bodelwyddan. Situated in an area with excellent public transport links, nearby schools for all ages, local amenities, the local hospital and golf course. The property offers spacious accommodation which comprises of two double bedrooms, a large lounge, kitchen/diner and shower room. The bungalow benefits from having gas central heating and UPVC double glazed windows throughout and spectacular views at the rear of the property overlooking the open fields. With the added benefit of a garage, off road parking and front and rear garden. This property offers both convenience and outdoor space for relaxation and entertaining.

## Key Features

- Detached bungalow
- Garage and parking facilities
- Garden overlooking open countryside
- Shower room
- Council Tax - C
- Two spacious double bedrooms
- Nearby schools and amenities
- Large and bright lounge
- EPC - D
- Freehold



**Floor Plan**

Total floor area 85.4 m<sup>2</sup> (919 sq.ft.) approx

This plan is for illustration purposes only and may not be representative of the property. Plan not to scale. Powered by PropertyBox