

14 Canolblas Avenue, Bodelwyddan, Denbighshire, LL18 5TW

£176,000

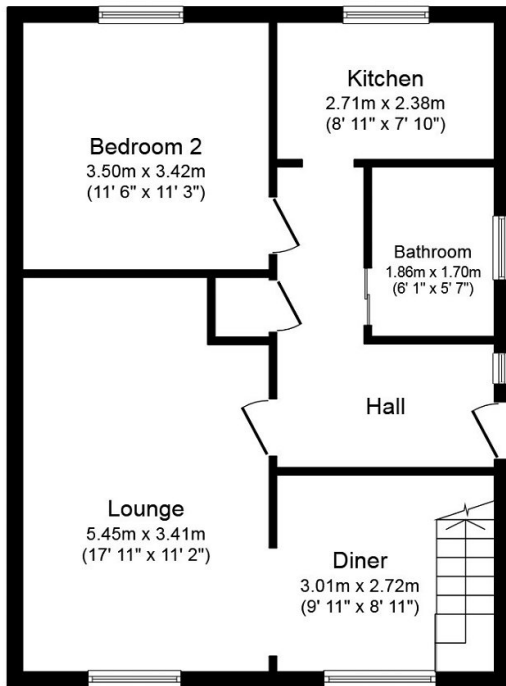
🛏️ 2 🍽️ 1 🛋️ 2



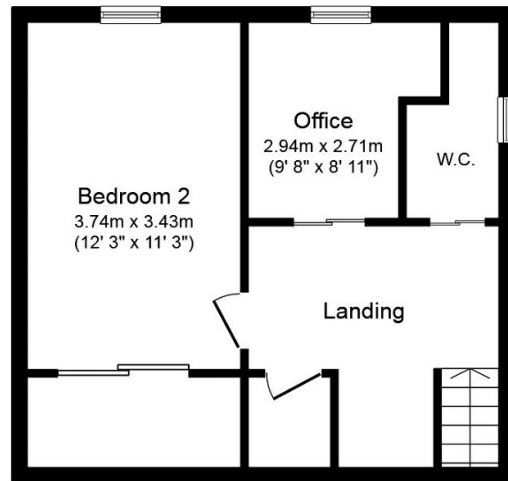
Set in the village of Bodelwyddan, conveniently located, this property has excellent public transport links, ensuring easy access to nearby schools and local amenities. Ysbyty Glan Clwyd hospital is just minutes away. The famous Marble church, golf course and Bodelwyddan Castle are also located within the village where you can also explore the area's beauty through its local walking routes. This semi detached bungalow comprises of a spacious living/dining area, kitchen, two double bedrooms, a study/hobby room and bathroom and separate upstairs wc. There are gardens to the front and rear and a long driveway providing ample parking. The property benefits from having uPVC double glazing and gas central heating throughout.

Key Features

- Semi detached bungalow
- Two spacious double bedrooms
- Enclosed rear garden
- Study/hobby room
- Council Tax - C
- Village location
- Large lounge/diner
- Off road parking
- EPC - D
- Tenure - Freehold



Ground Floor



First Floor

Total floor area 98.6 m² (1,061 sq.ft.) approx

This plan is for illustration purposes only and may not be representative of the property. Plan not to scale. Powered by PropertyBox