

20 Lon Y Berllan, Abergele, LL22 7JF

£420,000

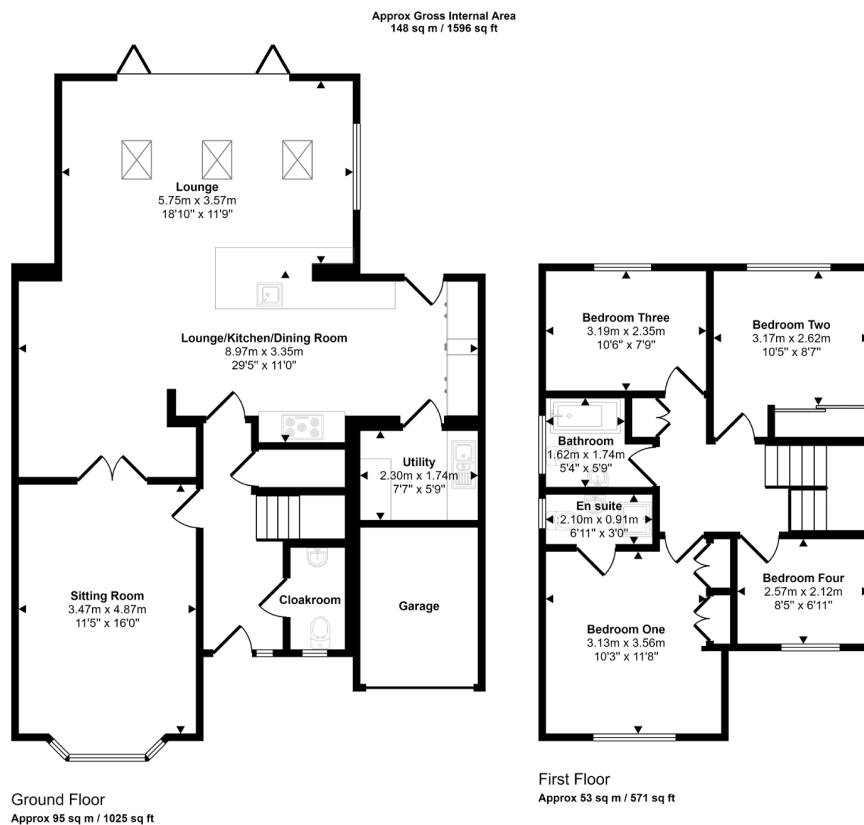
🛏️ 4 🚿 2 🚗 2



Welcoming new to the market this stunning detached house perfect for a family home. Offering a beautifully designed kitchen extension, providing an open plan lounge/kitchen/dining space, ideal for socialising, with large glass bi-fold doors opening out to the rear garden. A modernised sitting room with feature fireplace is located on the ground floor along with a cloakroom and utility. The first floor provides four bedrooms, one with en suite and a bright three piece bath room suite. Outside the property benefits from a large driveway perfect for off-street parking and a single garage. To the rear the garden is laid to lawn with paved patio areas perfect for Al-fresco dining where you can sit back and enjoy the pretty sea views.

## Key Features

- Detached House
- Perfect family home
- Lounge/Kitchen/Dining Room
- Garage
- EPC - TBC
- Four bedrooms
- Stunning Kitchen extension
- Modern sitting room
- Driveway providing off-street parking
- Council Tax Band - E



This floorplan is only for illustrative purposes and is not to scale. Measurements of rooms, doors, windows, and any items are approximate and no responsibility is taken for any error, omission or mis-statement. Icons of items such as bathroom suites are representations only and may not look like the real items. Made with Made Snappy 360.