

25 Bron Wern, Llanddulas, Abergele, LL22 8JD

£330,000

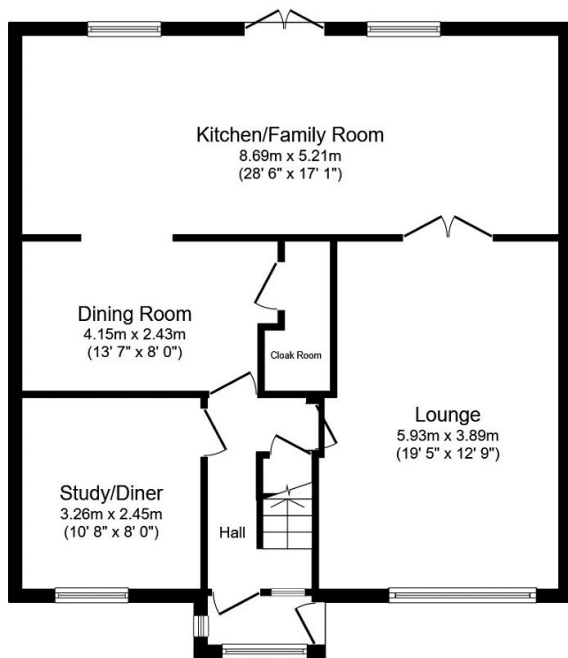
3 2 2



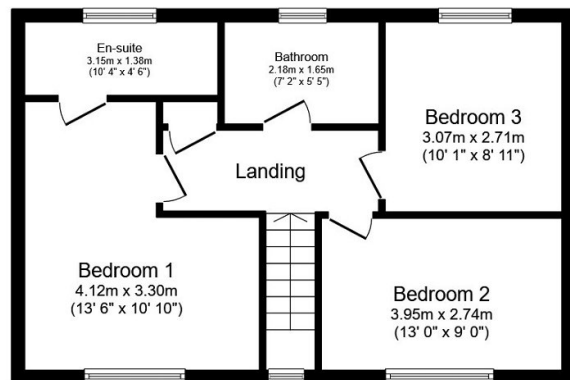
Welcoming to the market this beautifully presented, detached house perfect for a family home. Offering a stunning extension of the kitchen/dining area creating a larger and brighter space. Comprising of three bedrooms, one with ensuite, lounge with feature fireplace, study ideal for working from home, three piece bathroom suite, downstairs cloakroom and porch. Outside the property benefits from gardens to the front and rear with a paved patio area perfect for Al fresco dining. The single garage is also located here offering power and light along with a concrete driveway providing space for off-street parking. Located on a lovely corner plot in Llanddulas where the A55 expressway is easily accessed and is within 2.7 miles of Abergele.

Key Features

- EPC -D
- Council Tax Band - D
- Driveway perfect for off-street parking
- Single garage
- Gardens to the front and rear
- Modernized ensuite
- Immaculate property
- Open-plan kitchen/diner
- Three bedrooms
- Detached House



Ground Floor



First Floor

Total floor area 128.1 m² (1,379 sq.ft.) approx

This plan is for illustration purposes only and may not be representative of the property. Plan not to scale. Powered by PropertyBox