

7 Ronaldsway, Bodelwyddan, Rhyl, LL18 5TS

Guide Price £179,950

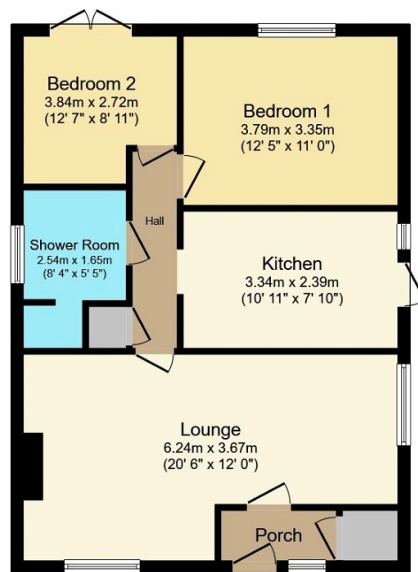
🛏️ 2 🍽️ 1 🚗 1



Welcoming to the market this pleasing detached bungalow. Comprising of Two bedrooms, bright kitchen, lounge with feature fireplace, entrance porch and Three piece shower room suite. Outside the property offers an ample size driveway perfect for off-street parking, garden to the front and south/west facing garden to the rear with a detached garage. Located in Bodelwyddan providing various local amenities, benefiting from the hospital being within 1.4 miles away and the A55 expressway is easily accessed.

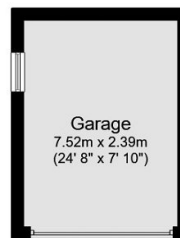
Key Features

- Council Tax Band - D
- EPC - D
- Within a few minutes drive to Bodelwyddan Hospital
- Close to local amenities
- A55 easily accessible
- Driveway perfect for off-street parking
- Detached garage
- South/west facing garden
- Two bedrooms
- Detached Bungalow



Floor Plan

Floor area 61.1 sq.m. (657 sq.ft.) approx



Outbuilding

Floor area 9.9 sq.m. (107 sq.ft.) approx

Total : 71.0 sq.m. (764 sq.ft.) approx
Net floor area 61.1 sq.m. (657 sq.ft.)
Garage 9.9 sq.m. (107 sq.ft.)

Sizes and dimensions are approximate, actual may vary.
Printed Contact Details...

Powered by audioagent.com