

29 The Dale, Abergele, Conwy, LL22 7DS

£179,950

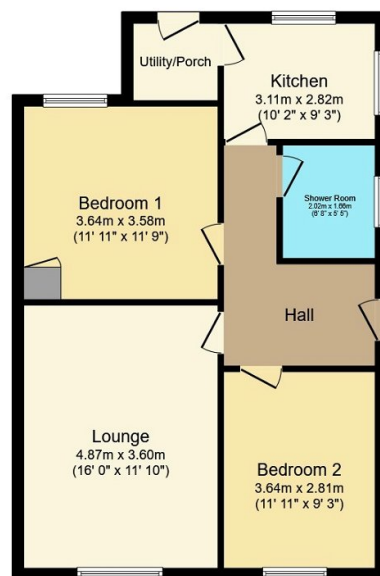
🛏️ 2 🚿 1 🚺 1



Located in the popular, residential town of Abergele, this semi detached bungalow benefits from two double bedrooms, a spacious lounge, kitchen, utility porch and Three piece shower room suite. Providing a gated driveway, perfect for off-street parking and low maintenance gardens to the front and rear. The rear garden is paved with a timber storage shed and there is a detached single garage with a roller shutter door and side access. Abergele is within walking distance from the property offering various cafés and shops, a Tesco supermarket and schooling for all age groups.

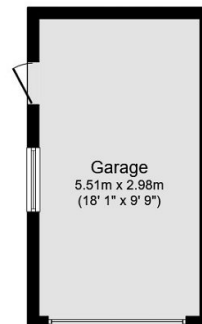
Key Features

- Semi detached bungalow
- Two bedrooms
- Detached garage
- Low maintenance gardens to the front and rear
- Driveway providing off-street parking
- Within minutes walk to Abergele Golf Course
- Close to the local town
- Tenure - Freehold
- Council Tax Band - C
- EPC - D



Floor Plan

Floor area 62.5 sq.m. (673 sq.ft.) approx



Garage

Floor area 16.4 sq.m. (177 sq.ft.) approx

Total floor area 79.0 sq.m. (850 sq.ft.) approx

This plan is for illustration purposes only and may not be representative of the property. Plan not to scale.

Powered by audioagent.com