

1 Maen Gwyn, Abergele, Conwy, LL22 7BZ

£259,950

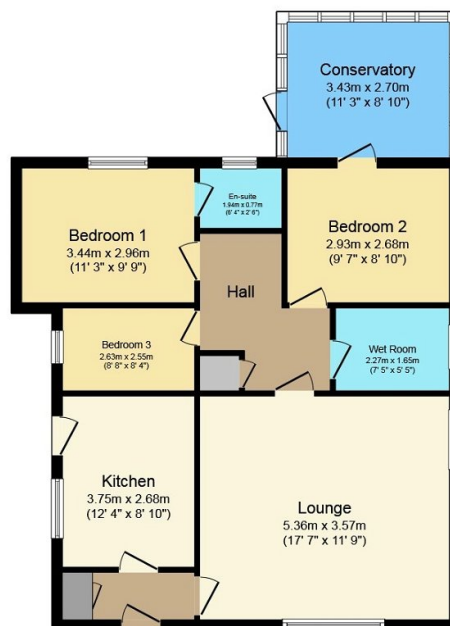
3 2 1



A detached bungalow within a prime location. This lovely property is set in a quiet cul de sac on the popular Woodlands Estate and really is 'ready to walk into,' offering spacious accommodation including a large lounge, a modern fitted kitchen, three bedrooms and shower room. Gas central heating, uPVC double glazing and guttering throughout. The good size garden is fully enclosed and there is a detached garage, driveway and substantial car port. Abergele offers a variety of shops and leisure facilities including Tesco and a sports centre. Access to the A55 Expressway is within one mile, giving excellent transport links to the North Wales coast and beyond.

Key Features

- Detached bungalow
- Well maintained
- Modern kitchen
- Three bedrooms
- Conservatory
- Garage, car port and ample parking
- Easy to maintain exterior
- Freehold
- EPC rating - C
- Council tax band - D



Floor Plan

Floor area 80.7 sq.m. (869 sq.ft.) approx

Total floor area 80.7 sq.m. (869 sq.ft.) approx

This plan is for illustration purposes only and may not be representative of the property. Plan not to scale.