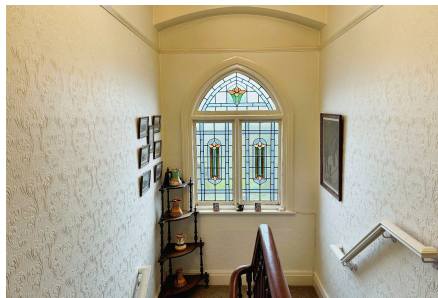


Dolhyfryd, Rhuddlan Road, Abergele, LL22 7HL

£385,000

🛏️ 4 🚿 1 🚗 3



SIGNIFICANT REDUCTION. A substantial family house with the bonus of an annex, which is ideal for rental purposes. Previously being the residence of the Mayor of Abergele, this lovely property offers space in abundance and includes some original and delightful features such as decorative cornices, picture rails, deep skirting boards and stained glass windows. The spacious accommodation includes three reception rooms, large kitchen/dining room plus utility room, four bedrooms and a charming bathroom with a four piece suite. The attached annex has its own entrance, lounge, fitted kitchen, two double bedrooms and bathroom, offering a perfect long term let/holiday rental or accommodation for a dependant relative. There is ample forecourt parking and a double garage offering further enhancement.

Key Features

- Prestigious family house
- Three reception rooms
- Double garage
- Large garden
- Council tax band - F
- No forward chain
- Four bedrooms
- Separate two bedroom annex
- EPC rating - House E - Annexe D
- Freehold



Total floor area 212.4 sq.m. (2,287 sq.ft.) approx

This plan is for illustration purposes only and may not be representative of the property. Plan not to scale.

Powered by audioagent.com