

Bryn y Pin, Groesffordd Marli, Conwy, LL22 9DT

Offers Over £399,000

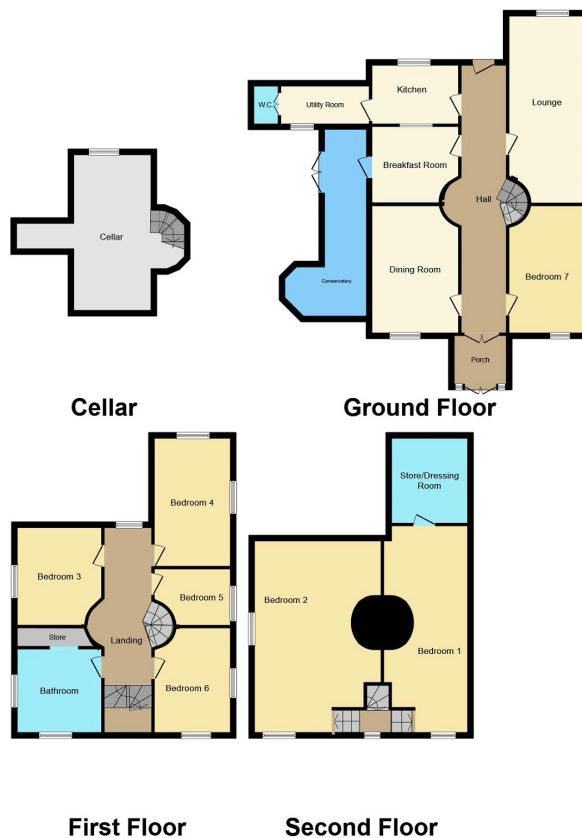
🛏️ 7 🚿 1 🚗 2



Peter Large Estate Agents are pleased to bring to the market this prestigious landmark property, steeped in history and situated in a prominent position. Located on the brow of a hill, this substantial property enjoys glorious countryside views and, although in a rural setting, is just minutes from the A55 North Wales Expressway at Bodelwyddan. The village has a primary school, general hospital, local shops, the renown Marble Church and famous castle. The house is built around a circular tower which is reputed to date back to the 12th century. Further extensions are believed to have been made in the early 16th century.

Key Features

- Link Detached House
- Cellar
- Panoramic Views
- Unique property
- Council tax band - G
- Seven Bedrooms
- Conservatory
- Driveway Parking
- Freehold
- EPC rating - TBC



This plan is for illustration purposes only and may not be representative of the property. Plan not to scale.

Powered by audioagent.com