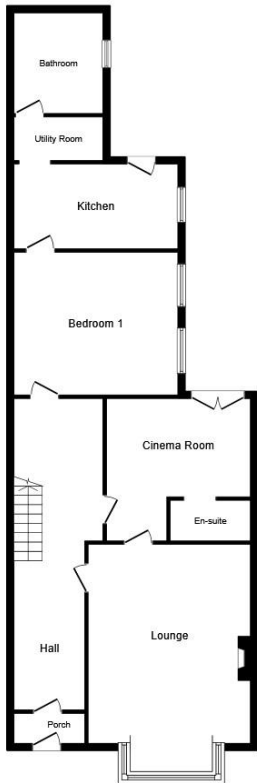
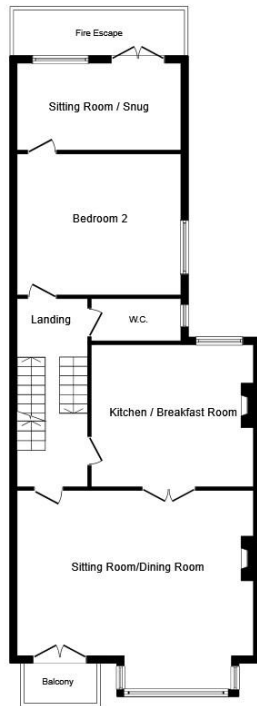


PETER LARGE

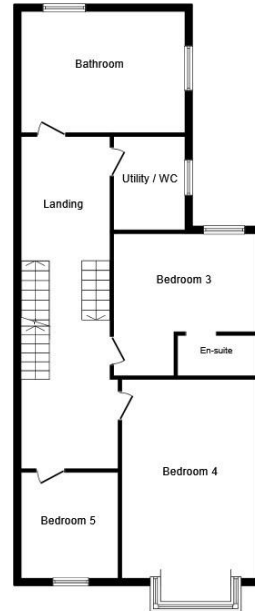
ESTATE AGENTS



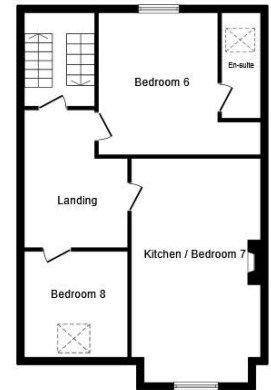
Ground Floor



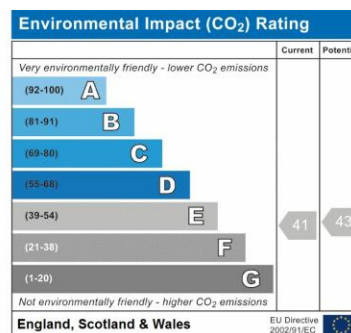
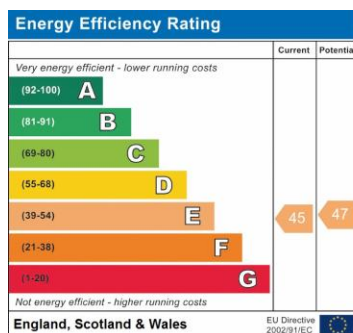
First Floor



Second Floor



Third Floor



COUNCIL TAX BAND

Tax band

TENURE

Freehold

LOCAL AUTHORITY

Denbighshire County Council

DATE:

29th January 2020

OFFICE

19 Clwyd Street
Rhyl
Denbighshire
LL18 3LA

T: 01745 334411

E: rhyl@peterlarge.com

W: www.peterlarge.com