

20 Pendyffryn Court, Pendyffryn Road, Rhyl, LL18 4RU

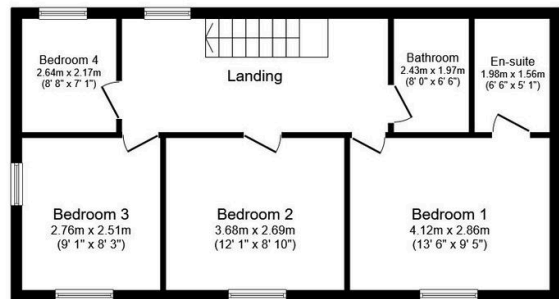
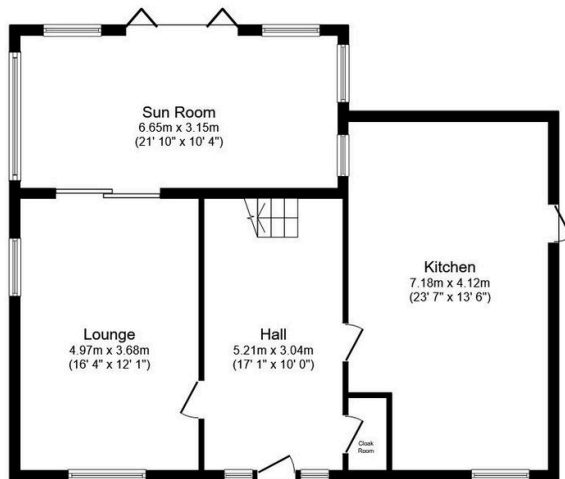
£395,000

🛏 4 🚿 2 🛋 2



Presenting an immaculate four-bedroom detached family home. This impressive property offers spacious and contemporary accommodation throughout, blending functionality with quality finishes to create an exceptional modern living environment. The home welcomes you with a light reception hall, lounge having large sunroom off further extending the living space. The well-appointed kitchen with dining room, ensures a seamless flow of space and an ideal ground floor cloaks facility. Upstairs are four well-proportioned bedrooms, master with en-suite facility and family bathroom. Externally, the property enjoys landscaped gardens to the rear. In addition the property offers ample off-street parking leading to a detached single garage. Located with easy access to Rhyl's town centre, this family home benefits from proximity to excellent local amenities, and schools at all levels are within walking distance, making it ideal for family living.

- Immaculate family home in quiet courtyard location
- Generous reception room
- Good size rear gardens
- Ample off-street parking
- EPC - C / Council tax - E / Freehold
- Four spacious bedrooms
- Large sunroom with garden views
- Detached single garage
- Close to schools and amenities
- Date 09/10/2025



Total floor area: 150.4 sq.m. (1,619 sq.ft.)

This floor plan is for illustrative purposes only. It is not drawn to scale. Any measurements, floor areas (including any total floor area), openings and orientations are approximate. No details are guaranteed, they cannot be relied upon for any purpose and do not form any part of any agreement. No liability is taken for any error, omission or misstatement. A party must rely upon its own inspection(s). Powered by www.Propertybox.io