

7 Trehearn Drive, Rhyl, LL18 3RR

£280,000

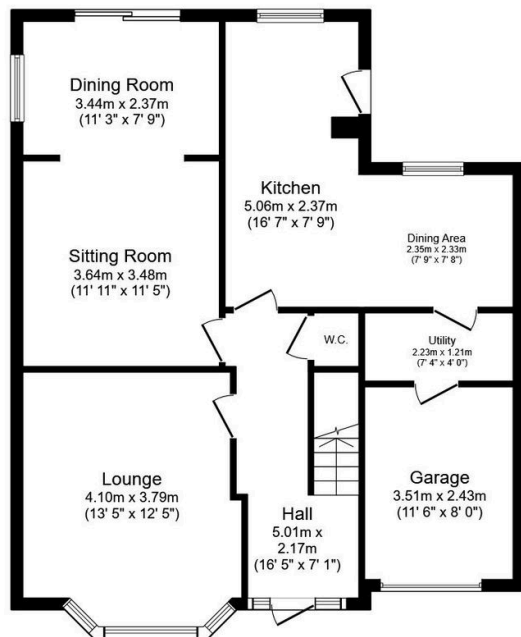
🛏 4 🚿 3 🚗 2



Presenting this impressive four-bedroom detached house within a sought after location of East Rhyl. The property has been well maintained, making it an ideal choice for families seeking both space and comfort. Upon entering, you are greeted by two generous reception rooms, providing flexible spaces, the kitchen is thoughtfully designed with a dedicated further dining space perfect for both everyday meals and entertaining and benefits from a practical utility room, and ground floor cloaks. All four bedrooms are well-proportioned, offering ample space. Notably, the second bedroom benefits from an en-suite facility, adding convenience. Externally, a delightful garden provides the perfect setting for outdoor entertaining and relaxation, whilst the property's integral garage offer valuable additional storage and driveway.

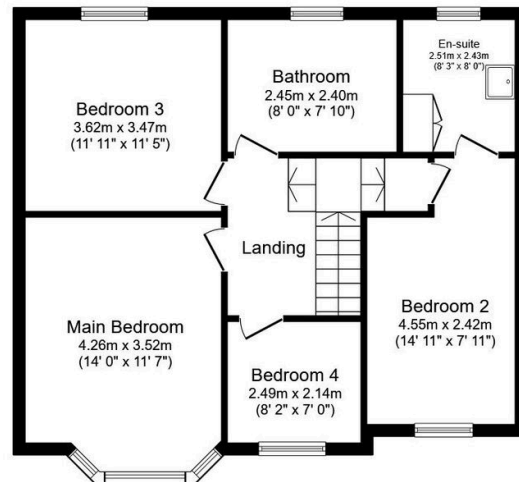
Key Features

- Detached family home
- Four spacious bedrooms
- Kitchen with dining area
- Delightful private garden
- EPC - D / Council tax - D / Freehold
- Highly sought after location
- Three reception rooms
- Practical utility room
- Single and attached garage
- 09/10/2025



Ground Floor

Floor area 81.5 sq.m. (878 sq.ft.)



First Floor

Floor area 65.3 sq.m. (703 sq.ft.)

Total floor area: 146.8 sq.m. (1,580 sq.ft.)

This floor plan is for illustrative purposes only. It is not drawn to scale. Any measurements, floor areas (including any total floor area), openings and orientations are approximate. No details are guaranteed, they cannot be relied upon for any purpose and do not form any part of any agreement. No liability is taken for any error, omission or misstatement. A party must rely upon its own inspection(s). Powered by www.Propertybox.io