

Clwyd Gardens, Kinmel Bay, Conwy LL18 5NB

Offers In Region Of £100,000

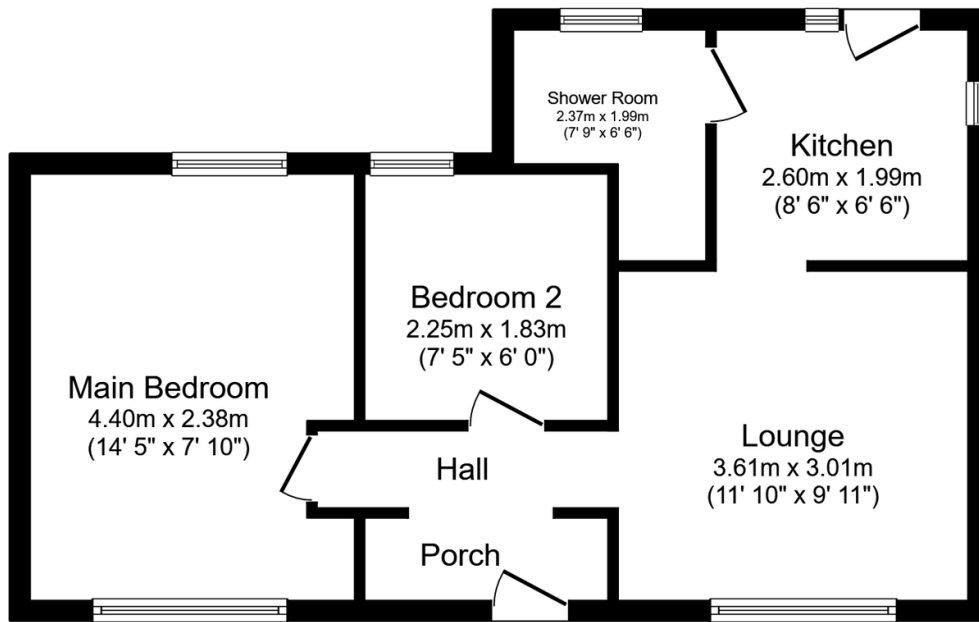
2 1 1



This two bedroom detached bungalow is set on the popular development called Sandy Cove in Kinmel Bay with shops, public amenities and the promenade all within walking distance. The property would benefit from a programme of renovation but benefits by way of uPVC double glazing, two bedrooms, lounge, kitchen, shower room and large rear garden. The property would suit an investment buyer looking for a property with a potential rental income or the retirement market. Early viewing is recommended.

Key Features

- DETACHED BUNGALOW
- TWO BEDROOMS
- IN NEED OF RENOVATION
- POPULAR SEASIDE LOCATION
- LARGE REAR GARDEN
- OFF ROAD PARKING
- CLOSE TO BEACH & PROMENADE
- EPC RATING - D
- COUNCIL TAX BAND - B
- DATE INSTRUCTED - 12/09/2025



Floor Plan

Floor area 49.5 sq.m. (533 sq.ft.)

Total floor area: 49.5 sq.m. (533 sq.ft.)

This floor plan is for illustrative purposes only. It is not drawn to scale. Any measurements, floor areas (including any total floor area), openings and orientations are approximate. No details are guaranteed, they cannot be relied upon for any purpose and do not form any part of any agreement. No liability is taken for any error, omission or misstatement. A party must rely upon its own inspection(s). Powered by www.Propertybox.io