

2 Llys Tudur, Rhyl, LL18 4AX

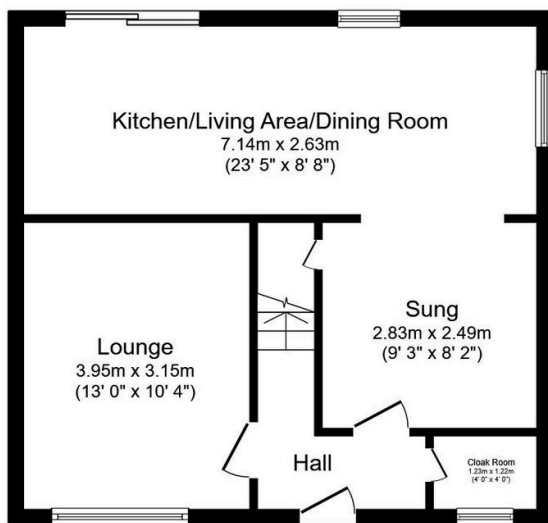
£275,000

🛏 4 🍳 2 🛋 2



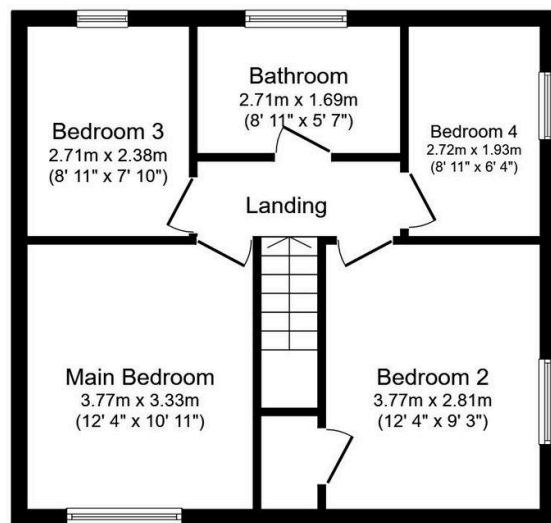
Presenting a newly refurbished detached family home standing proudly on a desirable corner position. Offering a contemporary interior within and can be described as 'ready to walk into'. The property is perfectly suited for families seeking both space, comfort and offers four bedrooms, the principal and two further bedrooms are doubles, while the fourth is a cosy single and stylish four-piece family bathroom. The heart of the home is its open-plan kitchen, seamlessly flowing into the living /dining area which in turn leads out to the private manicured garden. Ground floor cloaks, Lounge and snug both with media walls. Outside, the home boasts a private garden ideal for entertaining and Family gatherings. Double drive providing off street parking leading to double garage. The property is located conveniently close to local amenities, green spaces, walking and cycling routes.

- Newly refurbished ready to walk-into
- Four bedrooms
- Stylish four-piece family bathroom
- Open-plan kitchen /living /dining area
- Private secure garden
- Double garage and drive
- Sought after location close to amenities
- Freehold
- EPC - C / Council tax - E
- Date instructed 09/09/2025 P/R 22/12/2025



Ground Floor

Floor area 48.0 sq.m. (517 sq.ft.)



First Floor

Floor area 48.1 sq.m. (517 sq.ft.)

Total floor area: 96.1 sq.m. (1,034 sq.ft.)

This floor plan is for illustrative purposes only. It is not drawn to scale. Any measurements, floor areas (including any total floor area), openings and orientations are approximate. No details are guaranteed, they cannot be relied upon for any purpose and do not form any part of any agreement. No liability is taken for any error, omission or misstatement. A party must rely upon its own inspection(s). Powered by www.Propertybox.io