

## Pennant Farm, Prion Rd, Denbigh, Denbighshire LL16 5ST

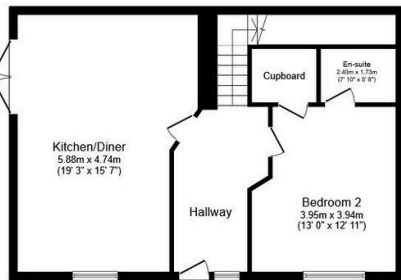
£645,000

🛏 4 🚿 3 🛋 1



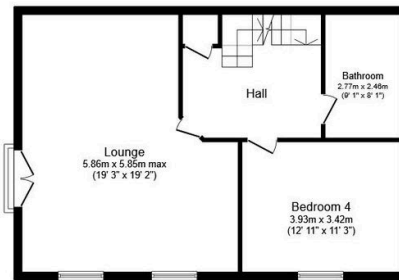
This stunning Barn conversion nestled in a sought-after semi-rural location of Denbigh and offers breathtakingly views across the Clwydian hillside. The house boasts a generous layout, four spacious double bedrooms, two having en-suites, well-appointed kitchen, lounge having a Juliet balcony. Finished to the highest standard with unique feature of this property is its eco-friendly appeal, with solar panels installed, A rated double glazed doors and windows ensuring sustainable and efficient energy consumption. Benefits of a garage and ample parking space, providing ease and convenience for you and your guests. The beautiful exterior complements the interiors, with an exquisite garden that can serve as a tranquil retreat. This property offers a blend of luxury, comfort, and sustainability. A viewing is highly recommended to fully appreciate the unique features and charm of this stunning home.

- BARN CONVERSION
- STUNNING VIEWS
- LARGE KITCHEN/DINER
- PLENTY OF OFF ROAD PARKING
- EPC - TBC
- COUNTRYSIDE LOCATION
- FOUR DOUBLE BEDROOMS
- LANDSCAPED GARDENS
- COUNCIL TAX - F
- INSTRUCTED - 30/06/25



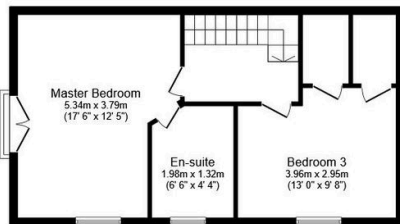
Ground Floor

Floor area 67.1 sq.m. (722 sq.ft.)



First Floor

Floor area 67.1 sq.m. (722 sq.ft.)



Second Floor

Floor area 53.0 sq.m. (571 sq.ft.)

Total floor area: 187.3 sq.m. (2,016 sq.ft.)

This floor plan is for illustrative purposes only. It is not drawn to scale. Any measurements, floor areas (including any total floor area), openings and orientations are approximate. No details are guaranteed, they cannot be relied upon for any purpose and do not form any part of any agreement. No liability is taken for any error, omission or misstatement. A party must rely upon its own inspection(s). Powered by [www.Propertybox.io](http://www.Propertybox.io)