

## 26 Bryn Lllys, Rhyl, LL18 4EG

£230,000

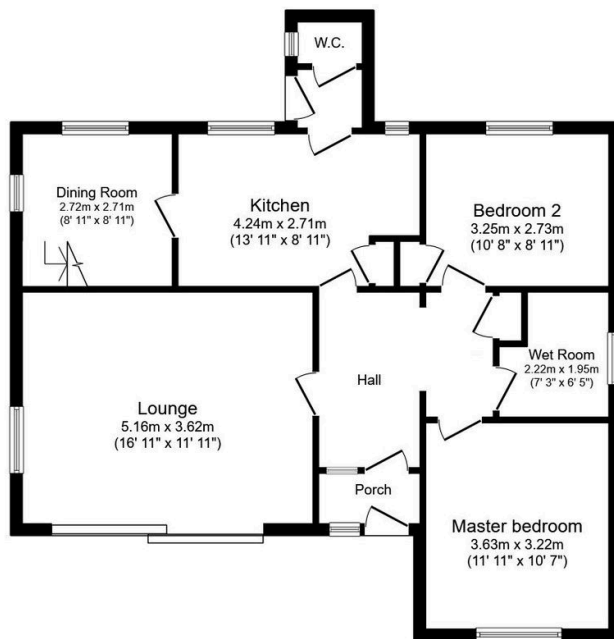
🛏 2 🚿 1 🛋 2



For Sale is this unique two/three bedroom detached dormer bungalow within a sought-after location with public transport links and short drive from the seafront and the main town centre of Rhyl. This property requires modernisation and holds a lot of potential for prospective buyers looking to put their own stamp on their new home. The bungalow boasts large lounge, dining room, kitchen with utility area, two double bedrooms, wet room and dormer room. One of the standout features of this property is the outdoor space. The garden provides an excellent opportunity for those with green fingers to create their own oasis or a safe play area for children. In addition, the property benefits from driveway leading to a double garage, providing secure parking or additional storage space.

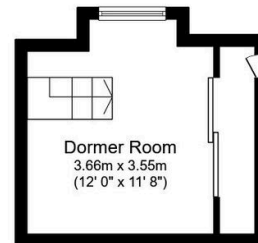
## Key Features

- Detached dormer bungalow
- Large rear garden
- Two reception rooms
- Some modernisation
- Freehold / EPC - D / Council tax - C
- Two/three bedrooms
- Double garage
- Wet room
- Sought after location
- Date instructed 18/06/2025



**Ground Floor**

Floor area 80.4 sq.m. (866 sq.ft.)



**First Floor**

Floor area 14.1 sq.m. (152 sq.ft.)

**Total floor area: 94.5 sq.m. (1,018 sq.ft.)**

This floor plan is for illustrative purposes only. It is not drawn to scale. Any measurements, floor areas (including any total floor area), openings and orientations are approximate. No details are guaranteed, they cannot be relied upon for any purpose and do not form any part of any agreement. No liability is taken for any error, omission or misstatement. A party must rely upon its own inspection(s). Powered by [www.Propertybox.io](http://www.Propertybox.io)