

The Circle, Kinmel Bay, Conwy LL18 5NW

£160,000

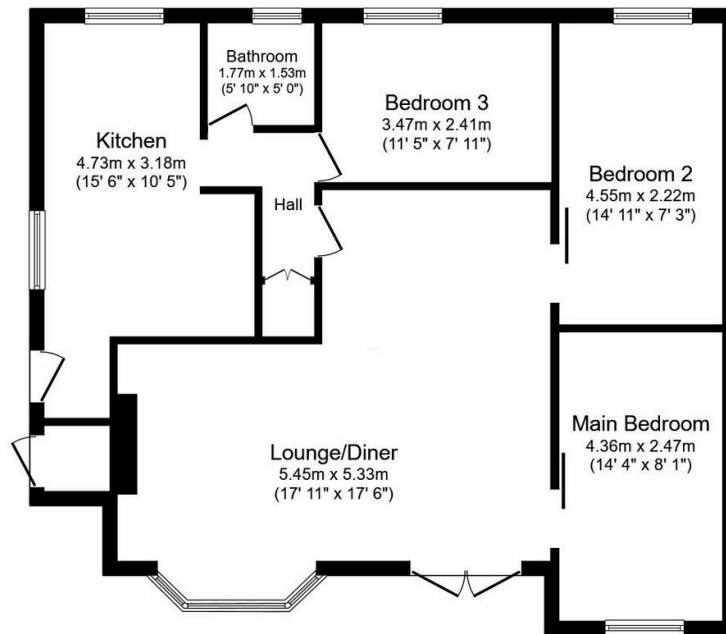
3 1 1



This good sized three bedroom detached bungalow is set in the popular seaside area of Kinmel Bay known as Sandy Cove. Whilst the property would benefit from a programme of refurbishment and cosmetic improvement, it benefits by way of gas central heating, uPVC double glazing, large "L" shaped lounge, three good sized bedrooms, kitchen and wetroom. The promenade and beach are a short walk away and the village of Kinmel Bay with its shops and public amenities is also within walking distance. Early viewing is highly recommended.

Key Features

- DETACHED BUNGALOW
- SEASIDE LOCATION
- THREE DOUBLE BEDROOMS
- LARGE LOUNGE
- KITCHEN DINER
- GARDENS & PARKING
- IN NEED OF REFURBISHMENT/PROBATE SALE
- COUNCIL TAX BAND - C
- EPC RATING - TBC
- DATE INSTRUCTED - 16/06/2025



Ground Floor
Floor area 85.1 sq.m. (916 sq.ft.)

Total floor area: 85.1 sq.m. (916 sq.ft.)

This floor plan is for illustrative purposes only. It is not drawn to scale. Any measurements, floor areas (including any total floor area), openings and orientations are approximate. No details are guaranteed, they cannot be relied upon for any purpose and do not form any part of any agreement. No liability is taken for any error, omission or misstatement. A party must rely upon its own inspection(s). Powered by www.Propertybox.io