

15 Bryn Coed, St. Asaph, Denbighshire, LL17 0DQ

£400,000

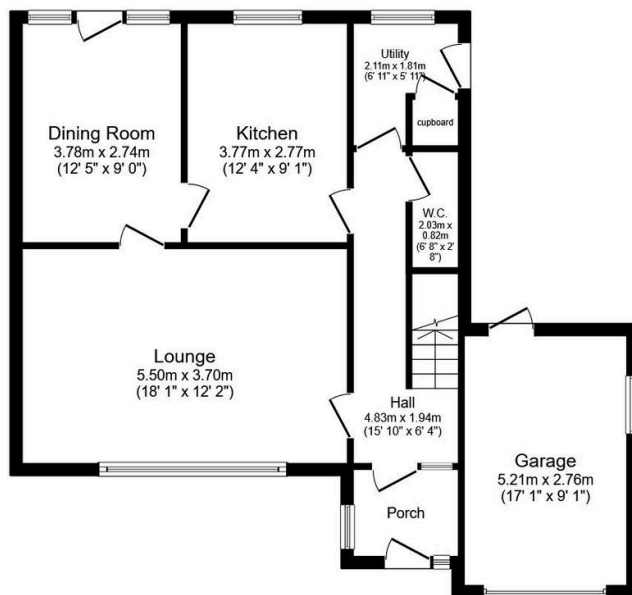
3 2 2



For sale is this detached house with no forward chain that oozes potential and scope for modernisation. This property is located in the Cathedral city of St. Asaph, situated in a highly sought-after area, with its private and comprehensive schools a stone's throw away making it perfect for families. This house boasts three bedrooms, master bedroom complimentary with en-suite, two reception rooms, kitchen, utility room, downstairs cloaks with WC and bathroom. Externally the house does not disappoint either. The property includes an attached single garage with off street parking and well maintained rear garden. Viewing is highly recommended to avoid disappointment and to see all that this property has to offer.

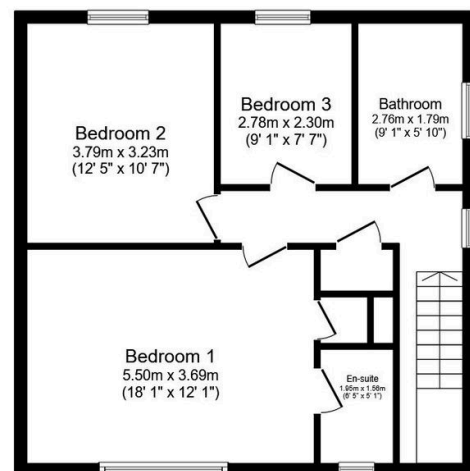
Key Features

- No forward chain
- Highly sought-after location
- Downstairs WC
- Garage
- EPC- D / Council Tax- E
- Detached
- Three bedrooms
- Off street parking
- Freehold
- Instructed 15/04/2025



Ground Floor

Floor area 72.2 sq.m. (778 sq.ft.)



First Floor

Floor area 56.9 sq.m. (613 sq.ft.)

Total floor area: 129.2 sq.m. (1,390 sq.ft.)

This floor plan is for illustrative purposes only. It is not drawn to scale. Any measurements, floor areas (including any total floor area), openings and orientations are approximate. No details are guaranteed, they cannot be relied upon for any purpose and do not form any part of any agreement. No liability is taken for any error, omission or misstatement. A party must rely upon its own inspection(s). Powered by www.Propertybox.io