

Woodside Gardens, Rhyl, Denbighshire LL18 2NP

£210,000

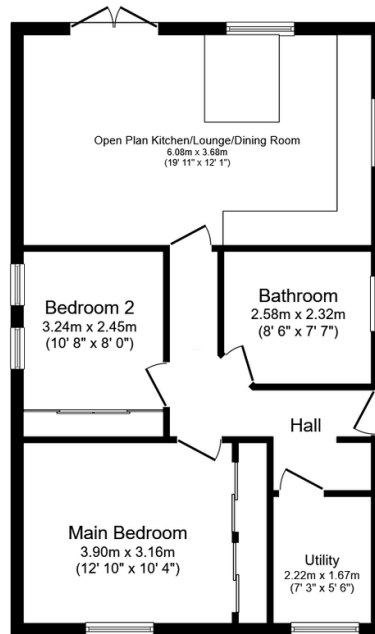
🛏 2 🚿 1 🛋 1



This beautifully presented two bedroom detached bungalow has been fully renovated and updated by its present owners to provide a spacious open plan kitchen/dining/lounge , two double bedrooms, utility room, large shower room and good size landscaped rear garden. The property is situated in a quiet residential area close to the town of Rhyl with its shops and public amenities, schools catering for all age groups are within easy reach and a retail park with a Sainsburys supermarket is near by. The property benefits by way of new double glazing, cavity wall insulation and gas central heating and has fully accessible doorways and level access. With ample parking and a lovely sunny rear garden early viewing is highly recommended.

Key Features

- DETACHED BUNGALOW
- TWO DOUBLE BEDROOMS
- GARDENS FRONT AND REAR
- FREEHOLD
- EPC RATING - D
- RECENTLY REFURBISHED
- OPEN PLAN LOUNGE/DINING/KITCHEN
- AMPLE OFF ROAD PARKING
- COUNCIL TAX BAND - C
- INSTRUCTED - 04/04/25



Floor Plan

Floor area 62.5 sq.m. (673 sq.ft.)

Total floor area: 62.5 sq.m. (673 sq.ft.)

This floor plan is for illustrative purposes only. It is not drawn to scale. Any measurements, floor areas (including any total floor area), openings and orientations are approximate. No details are guaranteed, they cannot be relied upon for any purpose and do not form any part of any agreement. No liability is taken for any error, omission or misstatement. A party must rely upon its own inspection(s). Powered by www.Propertybox.io