

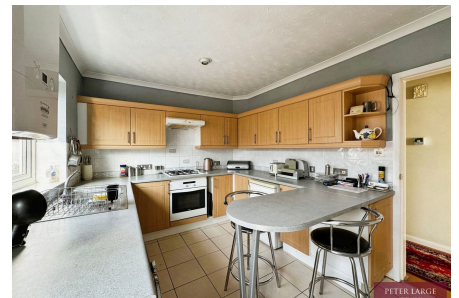
PETER LARGE

ESTATE AGENTS

7 Weaverton Drive, Rhyl, Denbighshire, LL18 4HY

£190,000

🛏 2 🚗 1 🚲 1



Presenting this delightful two bedroom detached bungalow with its generous layout and well-designed space offering an ideal home for those seeking a comfortable lifestyle. The property boasts a reception room, kitchen with breakfast bar, four piece bathroom, study and walk-in cloaks cupboard. The unique feature of this property is an additional attic room being of a good size making for a versatile space. The property has ample off street parking leading to carport, garage and enclosed landscaped gardens. Conveniently located in a sought-after location, the property is in close proximity to public transport links and local amenities.

rhyl@peterlarge.com

| 01745 334411

| www.peterlarge.com

19 CLWYD STREET, RHYL, DENBIGHSHIRE, LL18 3LA

Key Features

- Detached bungalow
- Two bedrooms
- Versatile attic room
- Well presented
- EPC - tbc / Council tax - C
- Good condition
- Single garage and carport
- Pretty sunny garden
- Freehold
- Date instructed 12/03/2025



TOTAL: 111.3 sq.m. (1,198 sq.ft.)

This floor plan is for illustrative purposes only. It is not drawn to scale. Any measurements, floor areas (including any total floor area), openings and orientations are approximate. No details are guaranteed, they cannot be relied upon for any purpose and do not form any part of any agreement. No liability is taken for any error, omission or misstatement. A party must rely upon its own inspection(s). Powered by www.Propertybox.io